

# Estimating the Direct Impact of Bank Liquidity Shocks on the Real Economy: Evidence from Letter-of-Credit Import Transactions in Colombia\*

JaeBin Ahn<sup>†</sup>

*International Monetary Fund*

September 30, 2014

---

## Abstract

This study identifies and provides a precise estimate of the direct impact of bank liquidity shocks on real economic activity by exploring letter-of-credit import transactions in Colombia during the 2008-09 global financial crisis. The detailed dataset on letter-of-credit transactions allows for exploiting within-importer-exporter variations across issuing banks. The study finds substantial effects of bank liquidity shocks on letter-of-credit import transactions: a 1 percentage point decline in bank deposit growth led to a 4.2 percentage point decline in imports in intensive margins, and to a 8.4 percent increase in the exit probability in extensive margins. Further, the estimate suggests that adverse bank liquidity shocks can explain at least 27 to 35 percent of the collapse in import transactions via letters of credit in Colombia. The results are robust to an alternative measure of bank liquidity shocks based on *ex ante* exposure to borrowings from foreign banks.

*JEL classification:* F1, F4, G1, G2

---

---

\*I thank to Stijn Claessens, Maya Eden, Fritz Foley, Rex Ghosh, Amit Khandelwal, Alex McQuoid, Heiwai Tang and seminar participants at the Bank of Korea, IMF, Korea Development Institute, NBER ITI meeting, Seoul National University, Sogang University, and the World Bank Annual Conference (ABCDE) for their helpful comments. The views expressed in this paper are those of the author and should not be attributed to the International Monetary Fund, its Executive Board, or its management.

<sup>†</sup>Research Department, International Monetary Fund, 700 19th Street NW, Washington, DC 20431.  
*email:* jahn@imf.org

## 1. Introduction

Money is fungible. So are most types of loans. There is no guarantee that a borrower will always abide by the purpose of a loan as stated on the loan request. This makes it an almost elusive quest to fully identify the direct link between loans and economic activity. A rare exception is a letter of credit. Its sole purpose—to pay for an import transaction specified therein—connects the financial sector with the real sector, and thus provides a unique prism through which to view the direct impact of financial shocks on real economic activity. The analysis in this paper draws on that information.

Since the global financial crisis, academic research has centered on two main transmission channels through which the financial crisis led to what has been called the Great Recession. One channel is the global transmission of financial shocks across countries, and the other is the subsequent transmission of financial shocks to the real economy. This paper aims to identify the second transmission channel, taking bank liquidity shocks transmitted by the first channel as a given.<sup>1</sup>

Banks can facilitate import transactions by issuing a letter of credit on behalf of importers particularly when they have greater capacity to mitigate contracting and financial frictions. As adverse liquidity shocks hit, however, banks might be less willing to be exposed to credit risks, and thus cut back on the supply of letters of credit.<sup>2</sup> This would directly affect importers' ability to buy abroad, resulting in real economic impacts—i.e., import reductions. Based on this notion, this study identifies and provides a precise estimate of the *direct* impact of bank liquidity shocks on real economic activity by exploring letter-of-credit import transactions in Colombia during the 2008-09 global financial crisis.<sup>3</sup>

It finds a substantial impact of bank liquidity shocks on the supply of letters of credit: a 1 percentage point decline in bank deposit growth led to a 4.2 percentage point decline in letter-of-credit supply in intensive margins, and to a 8.2 percent increase in the discontinuation probability in extensive margins. The non-fungibility of letters of credit ensures that the estimated impact of bank liquidity shocks on the supply of letters of credit is di-

---

<sup>1</sup>Growing evidence confirms that global banks played a significant role in propagating financial shocks via cross-border lending and/or local lending by subsidiaries/branches during the global financial crisis (e.g., Allen, Hryckiewicz, Kowalewski, and Tümer-Alkan, 2010; Cetorelli and Goldberg, 2011, 2012; De Haas and Van Horen, 2013, forthcoming; Giannetti and Laeven, 2012). Earlier studies include, among others, Peek and Rosengren (1997) on the Japanese banking crisis in early 1990's and Schnabl (2012) on the 1998 Russian default.

<sup>2</sup>Banks do not necessarily have to commit resources up front and the liquidity requirements to fund a letter of credit if they require importers to make a deposit for the full amount of the letter of credit issued. According to the IMF's Annual Report on Exchange Arrangements and Exchange Restrictions (AREAER) database that records the exchange and trade systems as well as capital controls of all IMF member countries, however, Colombia did not have such restrictions during the sample period studied in this paper. In this regard, this paper treats the "letter-of-credit" channel as a particular example of the general "credit-supply" channel, thereby a letter of credit involves providing actual credit.

<sup>3</sup>The term "direct" is stressed in order to distinguish the lending supply channel from other indirect effects that occur through, for example, asset value deterioration. See Shleifer and Vishny (2011) for details.

rectly translated into the impact on import transactions.<sup>4</sup> The results further suggest that importers were not able to offset the impact of these shocks by financing from other sources.

The identification strategy exploits the extremely detailed nature of Colombian import transaction data, which provide the name of importers, exporters, and banks for each letter-of-credit transaction. Together with the fact that there are many importer-exporter pairs that use multiple issuing banks for letter-of-credit transactions, the data allow for controlling for importer-exporter specific shocks, and for exploring within-importer-exporter variations in letter-of-credit transactions across issuing banks.

One potential concern about this estimation strategy is that it reflects only *relative* changes in the supply of letters of credit across banks for a given importer-exporter pair. It is plausible that the results were mainly driven by switching across issuing banks within an importer-exporter pair, without any significant effect on total imports via letters of credit. Similarly, it is conceivable that importer-exporter pairs switched to alternative payment methods in response to a reduced supply in letters of credit, without resulting in overall reductions in import transactions. The study undertakes further analysis to check these possibilities by investigating within-importer variations across exporters for both letter-of-credit and total-import transactions. It confirms that there is no evidence of such switching across banks or payment methods, and that the estimated impact of bank liquidity shocks on the supply of letters of credit is indeed entirely passed on to the aggregate reductions in import transactions.

The study also addresses another concern that the estimation results are likely to reflect the impact on bigger importers only. This is because smaller importers tend to import from a single exporter with a single issuing bank, and thus are excluded in the analysis with importer or importer-exporter fixed effects. The study investigates potential implications of such inadvertent sample selection problems by incorporating all importers into the analysis at the expense of fixed effects. The results show that smaller importers were much more vulnerable to adverse bank liquidity shocks than bigger importers. This strongly suggests that the baseline estimation results provide lower bounds for the estimate.<sup>5</sup>

All these findings are robust to an alternative measure of bank liquidity shocks based on *ex ante* exposure to borrowings from foreign banks as well as to an alternative time frame addressing seasonality issues. Notwithstanding the robust and clear identification results, a strong caution is warranted against deriving a conclusion that the “letter-of-credit” channel identified in this paper was mainly responsible for the import collapse in Colombia. This is because letters of credit accounted for only about 4 percents of total import transactions

---

<sup>4</sup>This is a stark contrast to other studies exploring general loans that are not always entirely used for designated real activities and thus are expected to deliver a noisier interpretation.

<sup>5</sup>This finding also has important implications on the distributive aspect of trade collapses during financial crises. To the extent that imported intermediate inputs are important factors in determining firm productivity, financially vulnerable smaller firms are likely to suffer from additional adverse productivity shocks (e.g., Gopinath and Neiman, 2014).

in Colombia during the period.<sup>6</sup> In this regard, it need to be re-emphasized that the main contribution of this paper should be interpreted as identifying one specific channel through which trade finance shocks affect import transactions. This could still serve as the benchmark to deliver potentially more meaningful aggregate implications to those countries that rely more on letters of credit for their international transactions.

This paper is related to two strands of literature. First, it builds on the literature that studies the bank lending channel through which financial shocks affect the real economy.<sup>7</sup> Identifying the real transmission of financial shocks has often been quite challenging not least because of the difficulty in separating out demand shocks from supply shocks. The problem is tackled by employing and improving on the novel methodology developed by Khwaja and Mian (2008) who use extensive sets of fixed effects to control for demand shocks. The detailed dataset in the present study provides a much finer level of disaggregation compared to those in previous studies that examined borrower-level variations across lenders for aggregate loans (e.g., Iyer, Lopes, Peydró, Schoar, 2013; Khwaja and Mian, 2008; Paravisini, Rappoport, Schnabl, and Wolfenzon, forthcoming; Schnabl, 2012).<sup>8</sup> The disaggregation level in the estimation process used here corrects potential biases and demonstrates that the failure to control for finer-level shocks would have underestimated the impact of bank liquidity shocks on loan supply substantially.

Beyond identifying letters-of-credits supply shocks, this study goes a step further than the previous literature and estimates the real consequences of the shocks (i.e., the impact of a reduced supply of letters of credit on import transactions). In this regard, this paper is most closely related to Paravisini et al (forthcoming), who examine the impact of financial shocks on international trade using bank-firm matched data as well as customs export data in Peru.<sup>9</sup> This paper complements Paravisini et al (forthcoming) by focusing on letters of credit, which are trade-specific financings, and thus provide direct evidence of the role

---

<sup>6</sup>As will be discussed in more detail later, the use of letters of credit is not uniform across importers, but rather concentrated on certain importers (or importer-exporter pairs). That is, it is not that most importers used letters of credit by around 4 percent of imports, but that most of imports by those who use letters of credit tend to be financed mostly by letters of credit. Therefore, the “letter-of-credit” channel could have significant real impacts on a certain group of importers.

<sup>7</sup>The subsequent impact of the recent global financial crisis on loan supply has been studied extensively in Iyer, Lopes, Peydró, Schoar (2014) for Portuguese non-financial firms; Popov and Udell (2012) for SMEs in emerging Europe; Puri, Rocholl, and Steffen (2011) for individual borrowers from German saving banks. Ashcraft (2005), Khwaja and Mian (2008), Paravisini (2008), Peek and Rosengren (2000) and Schnabl (2012) study earlier episodes. Bernanke and Blinder (1992) and Kashyap and Stein (2000), among others, address the bank lending channel through which monetary policy affects the real economy, and Peek, Rosengren, and Tootell (2003) examine the importance of loan supply shocks in general.

<sup>8</sup>Instead, this study examines borrower-project (importer-exporter) level variations across lenders (issuing banks) for a particular type of loan (letters of credit).

<sup>9</sup>Few other exceptions that study the real effects of adverse loan supply shocks include Amiti and Weinstein (2013), Kalemli-Ozcan, Kamil, and Villegas-Sanchez (2011), and Chodorow-Reich (2014). Claessens, Tong, and Wei (2012) study differential impacts of financial shocks on firms’ performance across various dimensions.

of trade finance in the great trade collapse. The non-fungible nature of letters of credit guarantees the validity of estimated effects, another advantage over other studies.

This represents an important contribution to the trade finance literature.<sup>10</sup> Despite the substantial research on the issue, the lack of direct trade finance data at the micro level has made it hard to evaluate the independent role of trade finance in the great trade collapse.<sup>11</sup> A notable exception is Niepmann and Schmidt-Eisenlohr (2013b) who find significant effects of U.S. banks' letter-of-credit supply shocks on U.S. exports across countries during the great trade collapse. While they explore geographical variations of shocks, the current study explores variations across banks within importer-exporter pairs, thereby complementing each other well by broadening our understanding of the topic.

This paper proceeds as follows. Section 2 provides background information on a letter of credit as well as Colombian economy during the recent global financial crisis, and the data is introduced in section 3. Section 4 discusses the identification strategy, and empirical findings are presented in section 5. Section 6 concludes.

## 2. Background

### 2.1. A Letter of Credit

<Figure 2> describes how international transactions are conducted using a letter of credit.<sup>12</sup> Instead of a direct transaction between an importer and an exporter, a letter of credit involves banks intermediating the transaction on their behalf. An importer's bank (i.e., issuing bank) promises to pay an exporter's bank (i.e., confirming bank) on behalf of an importer, and the exporter's bank guarantees the payment to an exporter whether the importer's bank actually pays or not. The entire transaction concludes with the payment from the importer to the importer's bank. This implies that, from the exporter's viewpoint, the nonpayment risk from the importer is replaced by the nonpayment risk from the importer's bank, and the exporter's bank assumes the nonpayment risk that would have been borne otherwise by the exporter. For this reason, it is critical for the importer's bank to assess the importer's credit risk correctly, while the exporter's bank needs to conduct a proper evaluation of the importer's bank's creditworthiness.

---

<sup>10</sup>Empirical evidence suggesting the important role of trade finance in the great trade collapse is provided in Ahn, Amiti, and Weinstein (2011), Amiti and Weinstein (2011), Berman, de Sousa, Martin, Mayer (2012), Berman and Martin (2012), Bricongne, Fontagné, Gaulier, Taglioni, Vicard (2012), Chor and Manova (2012), Feenstra, Li, and Yu (2013) among others. A theoretical framework is provided in Ahn (2011), Antràs and Foley (forthcoming), Olsen (2010) and Schmidt-Eisenlohr (2013). On the other hand, Levchenko, Lewis, and Tesar (2011) do not find supporting evidence, and Eaton, Kortum, Neiman, and Romalis (2011) attribute a minor role to the trade finance channel.

<sup>11</sup>There is a newly emerging literature employing various types of trade finance data. This includes Auboin and Engemann (forthcoming) and Van der Veer (forthcoming) for export credit insurance, and Felbermayr and Yalcin (2013) for export guarantees.

<sup>12</sup>The figure describes irrevocable confirmed letters of credit, which is the most commonly used among many other different types of letters credit.

The way banks are involved in letter-of-credit transactions makes it quite interesting to study how such transactions can be disturbed during financial crises. The inherent nature of inter-bank transactions in letters of credit resembles that of inter-bank lending markets. As evidence suggests, inter-bank lending markets almost collapsed during the recent global financial crisis (e.g., Afonso, Kovner, and Schoar, 2011), from which it can be inferred that the same could have happened for letter-of-credit transactions. Regulatory rules on capital requirements, which assign a letter of credit into one of the highest risk-weight categories, must have exacerbated the reluctance of confirming banks to be exposed to heightened default risk of issuing banks (e.g., BIS, 2011). At the same time, the unsecured nature of letters of credit must have led importer's banks to reduce issuance of them, as they reduced other types of loans, in response to adverse liquidity shocks.<sup>13</sup> These mechanisms provide the foundation on which the main analysis of this paper is based.

Although it is hard to come up with an exact number without any representative data, there are several sources of data from which an approximate share of international transactions covered by letters of credit in world trade can be inferred. Despite differing estimates across data sources, data sources mostly confirm that a letter of credit is one of the major payment methods used in international transactions.

The data include a bank survey conducted by the IMF and the Bankers' Association for Finance and Trade (BAFT). The survey asked participating banks to provide an estimate of the share of each payment method. According to the survey, letters of credit are estimated to account for, on average, around 40 percent of international transactions worldwide (Asmundson, Dorsey, Khachatryan, Niculcea, and Saito, 2011). Another survey report by the International Chamber of Commerce (ICC) found that a letter of credit accounts for about half of traditional trade finance, which is used for approximately 20 percent of total international transactions.

Besides survey data, information can be obtained from countries' customs data that provide payment method information for the universe of export and/or import transactions. Albeit specific to the source country, customs data are believed to deliver the most accurate figure. There are at least three countries that require importers and exporters to report the payment method used for each cross-border transaction: Chile, Colombia, and South Korea. A calculation based on Chilean National Customs Service data finds that letters of credit financed around 10 percent of total imports and exports during 2008-09.<sup>14</sup> Colombian data, the main data introduced in the next section in more detail, show that letters of credit were

---

<sup>13</sup>From a bank' perspective, letters of credit represent contingent liabilities or off-balance-sheet items, which do not directly affect capital-asset ratios but do affect capital adequacy ratio via risk-weighted asset.

<sup>14</sup>Chilean export and import data at the transaction level do not provide information on the identity of trading partners (at the firm level) or banks for each transaction. Given the crucial role of this information in the estimation strategy used in this study (as discussed in section 4), it was preferable to use Colombian import transaction data.

responsible for around 4 percent of total imports in 2008 and 2009.<sup>15</sup>

South Korean customs data offer a useful time-series picture of the changing role of letters of credit in total trade during the period from 1991–2012 (<Figure 1>).<sup>16</sup> It is rather striking to observe the rapidly declining role of letters of credit in South Korean trade. For both imports and exports, a letter of credit was used for most international transactions in the early 1990s, but its share started falling in the mid 1990s, and its rapid decline appears to have occurred during the Asian financial crisis. By 2012, the letter of credit accounted for around 20 percent of total trade.<sup>17</sup>

## 2.2. Colombia during the Global Financial Crisis

Financial shocks from the epicenter of the crisis rapidly diffused to emerging countries. It is by now well known that in the aftermath of the Lehman bankruptcy, banks stopped lending to one another and started pulling out their deposits from other institutions both within and across borders, and from both subsidiaries and arm’s length institutions. The international spillover from the financial crisis was not limited to the banking sector. The impact on the real economy was almost immediate. The most notable of the real consequences was an unprecedented collapse in trade, which far exceeded GDP declines worldwide (Baldwin, 2009).

Colombia was neither immune from nor an exception to the international transmission of shocks and the great trade collapse. As shown in <Figure 3>, after several years of rapid growth, total deposits in Colombia decelerated substantially in 2009 (solid line). This was in part precipitated by huge reductions in foreign banks’ claims on Colombian banks (dashed line), which constitute a large portion of bank-to-bank deposits in Colombia.

<Figure 4> plots quarterly imports in Colombia (solid line, left axis), which dropped by more than 30 percent during the subsequent three quarters after the onset of the financial crisis. Colombian imports financed by letters of credit (dashed line, right axis) showed similar and even more severe patterns. The remainder of this paper will explore these letter-of-credit import transactions in Colombia to identify and estimate the economic size of the direct transmission channel through which bank liquidity shocks affected the collapse in trade.

---

<sup>15</sup>Antràs and Foley (forthcoming) explore one U.S. food exporter’s detailed international transaction records. This firm is reported to have sold about 5.8% of total exports under letters-of-credit terms.

<sup>16</sup>This is publicly available on the Korea International Trade Association website ([http://www.kita.net/statistic/index\\_eng.jsp](http://www.kita.net/statistic/index_eng.jsp)).

<sup>17</sup>Although it is tempting to investigate reasons behind the declining share of letters of credit, it is beyond the scope of this paper. A more thorough discussion on the choice of payment methods is provided in Ahn (2011, 2014), Antràs and Foley (forthcoming), Engemann, Eck, and Schnitzer (2012, forthcoming), Hoefele, Schmidt-Eisenlohr, and Yu (2012), Niepmann and Schmidt-Eisenlohr (2013a), Olsen (2010) and Schmidt-Eisenlohr (2010).

### 3. Data

The primary data for this study come from the import transaction database of the Colombian National Customs and Taxes Authority (DIAN). The value of import transactions in the data adds up to 99.99 percent of the official import value reported by the Central Bank of Colombia.<sup>18</sup> The unique feature of the data, even when compared to other countries' micro-level customs data, is that every observation is recorded at the transaction level with extremely detailed information. This includes the name of importers and foreign exporters *both* at the firm level, payment methods, and the banks involved, in addition to other routine items such as cif value, quantity, 10-digit product codes, country of exports, dates, etc.

Regarding the payment methods item, there are three major payment methods (i.e., open account, cash-in-advance, and letter of credit) covering nearly all of the transactions. Given the focus of the paper, only letter-of-credit transactions are explored.<sup>19</sup> <Table 1> shows the total value and number of transactions paid by letters of credit in 2008 and 2009, and their share in total import transactions. In 2008, letter-of-credit transactions accounted for about 4.4 percent of total import transactions in value, and about 2.4 percent in number. In 2009, the share of letter-of-credit transactions declined to 3.4 percent and 2.1 percent in value and number, respectively. Although their share in Colombia is remarkably low relative to other countries or sources, these letter-of-credit transactions are nonetheless expected to most clearly identify the transmission of shocks from the financial sector to the real sector because the loans made by each bank (i.e., the letter of credit) have a direct one-to-one relationship with the real activity by each borrower (i.e., the import transaction supported by the letter of credit).

Detailed information on importers, exporters, and banks allows for identifying each importer-exporter with an issuing bank for every letter-of-credit transaction. Noting that imports started collapsing in the fourth quarter of 2008 through the second quarter of 2009 in <Figure 4>, the first three quarters of 2008 are classified as the pre-crisis period, and the subsequent three quarters as the post-crisis period, and the observations at the importer-exporter-bank level are aggregated in each period.<sup>20</sup> The main strategy here is to track each letter-of-credit transaction by an importer-exporter-bank triplet that was present in the pre-crisis period. Restricting the focus to such observations, panel A in <Table 2> provides mean and median values of pre-crisis letter-of-credit transactions in the sample. There are

---

<sup>18</sup>Small transactions of which the cost, insurance, and freight (cif) value is below US \$100 are not included in the main analysis so as to remove noisy transactions. The resulting observations cover 99.2 percent of the official import value.

<sup>19</sup>A more detailed discussion of other types of payment methods in the dataset is provided in Ahn (2014).

<sup>20</sup>Paravisini et al (forthcoming) also choose this time frame setting.



a total of 4,706 unique importer-exporter-bank triplets that conducted import transactions using letters of credit in the pre-crisis period. Of those, 1,189 importer-exporter-bank triplets continued letter-of-credit transactions in the post-crisis period, while 3,517 of them stopped such transactions. Those that continued tend to have had larger transaction values on average compared to those that stopped. The most interesting feature of letter-of-credit transactions is that there are many importer-exporter pairs that used letters of credit issued by multiple banks in a given period. These importer-exporter pairs with multiple issuing banks in the pre-crisis period constitute 1,823 observations. They form the baseline sample with the idea that demand shocks can be effectively controlled by looking at variations across banks within an importer-exporter pair. Again, among those 1,823 observations, 670 observations survived in the post-crisis period, while 1,153 observations were dropped.

Panel B in <Table 2> breaks down the sample at three different levels: by importer, by importer-country pairs, and by importer-exporter pairs. In the sample, there are 1,197 unique importers, of which 351 used multiple issuing banks and 436 imported from multiple exporters in the pre-crisis period. Similarly, there are 2,125 unique importer-country pairs, and 542 of them used multiple issuing banks. That there are more importer-country pairs than importers reflects the fact that some importers import from multiple countries. One potential strength of the current data on exporter information at the firm level is highlighted in the third column of the importer-country-level section. There are 496 importer-country pairs that have multiple exporters within the country. Unlike other existing datasets that would aggregate such transactions to the importer-country level, the dataset here records the transaction at the actual importer-exporter level. To the extent that import demand varies at each importer-exporter level, it will help correctly control for import demand shocks. Consequently, there are 3,629 unique importer-exporters, far exceeding the number of importer-country pairs due to the presence of multiple exporters per importer within a country. Among them, 746 importer-exporter pairs used multiple issuing banks, which constitute the baseline sample of 1,823 observations.

Given that this study is going to explore those importer-exporter pairs with multiple issuing banks, it is imperative to ask why they want to use multiple issuing banks in a given period. <Table 3> gives a rough idea of the pattern of the issuing bank choice for each letter-of-credit transaction by an importer-exporter pair. Each row in the table represents the average share of letters of credit issued by the  $n$ th most-used bank for each importer-exporter pair, and each column corresponds to those importer-exporter pairs that used total  $n$  issuing banks. The first cell on the diagonal is 100 percent because there is only one issuing bank for these importer-exporter pairs. The second column shows that those importer-exporter pairs that had letters of credit issued by two different banks tend to get 70 percent of total transactions covered by the major bank, and the remaining 30 percent by the secondary bank. Likewise, the third column shows that when an importer-exporter

pair uses three different issuing banks, on average, 62 percent of the total transaction is supported by the first bank, 26 percent by the second bank, and the remaining 11 percent by the third bank. One pattern that arises is that the issuance of letters of credit is not evenly distributed across banks within each importer-exporter pair.<sup>21</sup> The first few banks support most of the transactions, while the least-used banks cover only a small part of transactions. One rationale behind the pattern is that each bank imposes a credit line for each transaction, just as it does for other types of loans. If the total value of the transaction to be covered by letters of credit exceeds a credit limit at the first bank, the importer-exporter pair will apply the remainder to the second bank, and then repeat that until they get the transaction fully covered by letters of credit. Accordingly, the pair will use the first  $n - 1$  banks until the value covered by a letter of credit reaches the maximum available at each bank, and the last  $n$ th bank will take whatever remains with the share far below  $1/n$ . All else being equal, this would also imply that when the value of the transaction is larger, an importer-exporter pair is more likely to receive letters of credit from multiple issuing banks. This is consistent with <Table 2>, which showed that the mean and median value of total letter-of-credit transactions is much larger for importer-exporter pairs with multiple issuing banks. The implication of this pattern of issuing bank choices will be discussed in more detail in the empirical strategy introduced at the end of the next section.

Additional annual bank-level data compiled by the Bankscope database are incorporated into the primary import transactions data. Among 16 banks that provided letters of credit to Colombian importers in the pre-crisis period, three banks are excluded because their balance sheets data are not available in the Bankscope database.<sup>22</sup> <Table 4> presents summary statistics for some of the key bank-level variables. Banks in the sample reduced the issuance of letters of credit, on average, by 16 percent between the pre- and post-crisis periods. During the two-year period from 2007 to 2009, although total deposits at these banks kept growing by 22 percent on average, the growth rate almost halved to 6 percent in 2008-09 from 17 percent in 2007-08, which have been perceived as large adverse liquidity shocks by the banks. The loan growth rate moved similarly. Since balance sheets data are available only at the annual frequency and an accounting year closes at the end of each year, deposit growth between the two-year period from 2007 to 2009 is chosen to measure liquidity shocks via the deposit channel during the crisis in the main analysis of this paper.<sup>23</sup> <Figure 5> illustrates the relationship between the growth in the issuance of letters of credit

<sup>21</sup>Had that been the case, the diagonal would have been filled by (100, 50, 33, 25, 20, 16, 14) instead of the current one.

<sup>22</sup>These three banks were collectively responsible for less than 1 percent of total letter-of-credit transactions during the period. The remaining 13 banks are: Banco Comercial AV Villas, Banco Agrario de Colombia, Banco Colpatría - Red Multibanca, Banco Davivienda, Banco de Bogotá, Banco de Crédito (Helm Bank), Banco de Occidente, Banco Popular, Banco Santander Colombia (Banco CorpBanca Colombia), Banco GNB Sudameris, Bancolombia, BBVA Colombia, Citibank Colombia.

<sup>23</sup>During the period from December 2007 to December 2009, consumer price level (i.e., CPI) increased by 10 percent and the national currency depreciated by 3 percent against U.S. dollar in Colombia.

(y-axis) and the growth in total deposits (x-axis). Both are expressed as the deviation from the mean. The figure shows a weakly positive relationship between them, suggesting that banks with bigger adverse liquidity shocks may have reduced the supply of letters of credit more.

Lastly, information on banks' borrowing from foreign syndicated lenders is obtained from the Dealogic's Loan Analytics database. This is used to construct an indicator variable that captures each bank's *ex ante* (non)exposure to foreign lending shocks as an alternative measure of liquidity shocks. Among 13 banks in the sample above, 5 banks had borrowed from the international syndicated loan market at least once during the two-year period between 2005 and 2007, and are classified as exposed banks. Interestingly, 75 percent of deals made by these banks were recorded as loans for trade financing. Other 8 banks did not borrow from foreign syndicated lenders during the period, and thus are classified as unexposed banks. <Figure 6> shows quarterly evolution of total letters of credit issued by exposed banks and unexposed banks separately. 5 exposed banks collectively accounted for up to 60 percent of total letters of credit issued in Colombia in the third quarter of 2008, but the market share of these banks declined to 50 percent by the second quarter of 2009 as they experienced 60 percent drops in letters of credit issuance, while total letters of credit issued by unexposed banks dropped by 40 percent during the period. The subsequent sections will be devoted to confirming these patterns described in <Figure 5> and <Figure 6> in a formal way by carefully controlling for other factors such as demand-side shocks.

#### 4. Empirical Strategy

Every international transaction takes place between an importer and an exporter. When the transaction is backed by a letter of credit, it involves, in addition, a bank that issues a letter of credit and thereby promises to pay on behalf of an importer. Hence, the proper starting point for understanding letter-of-credit transactions is set at an importer-exporter-bank (*ijb*) level.<sup>24</sup>

The amount outstanding for each letter of credit will be determined by the supply and demand for issuance of letters of credit. Once an importer and an exporter agree to transact a certain value using letters of credit, the importer applies to a bank for a letter of credit, and the bank decides whether to issue it to support all or part of the transaction. An exporter's bank then decides whether to accept a letter of credit issued by the importer's bank, and thus whether to oblige itself to make payments to the exporter. Accordingly, just as with other general types of loans, the demand for letters of credit comes from importers and exporters in the real sector, while the supply of letters of credit is determined in the

---

<sup>24</sup>Strictly speaking, there is an additional dimension: the exporter's bank. Since the dataset does not identify exporters' banks, it is not made explicit in the expression. However, the presence and the role of confirming banks is taken into account in the analysis.

financial sector by issuing and confirming banks. The goal here is to identify the pure supply shocks for letters of credit triggered by an issuing bank's liquidity shocks, which can be achieved only if demand shocks are isolated from supply shocks.

We begin by specifying the changes in the value of letter-of-credit transactions for each importer ( $i$ )-exporter ( $j$ )-bank ( $b$ ) triplet between the pre-crisis and the post-crisis periods as:

$$\Delta LC_{ijb} = \beta_0 + \beta_1 \Delta B_b + \beta_v \Delta V_{ij} + \varepsilon_{ijb}, \quad (1)$$

where  $\beta_0$  is a constant capturing economy-wide shocks,  $\Delta B_b$  is the issuing bank's liquidity shocks, and  $\beta_1$  is the coefficient of interest that measures the effects of bank-level liquidity shocks on the supply of letters of credit. This is the letter-of-credit channel through which financial shocks affect international trade.  $\Delta V_{ij} = \Delta V_i' + \Delta V_{ij}''$  is the composite of various factors at the importer and importer-exporter levels, with  $\beta_v$  being a vector of corresponding coefficients.

The main component of the importer-level shocks will be importer-specific demand and credit shocks. An importer may decide to reduce overall imports by, say, 10 percent. Also, when an importer's creditworthiness deteriorates, it will adversely affect banks' decisions to issue letters of credit on behalf of the importer. Furthermore, when an importer imports from several exporters, each of which is selling different types of goods, it is very likely that demand shocks will occur at the importer-exporter level even within an importer. For example, demand for high-quality goods tends to decline relatively more than demand for low-quality goods during recessions. Similarly, the demand for durable goods tends to decline more than that for nondurable goods. As such, there is no doubt that there are various shocks at both the importer and importer-exporter levels, but a more relevant question here is whether they are correlated with bank-level liquidity shocks,  $\Delta B_b$ .

To the extent that importer-exporter-level shocks are not correlated with bank-level liquidity shocks (i.e.,  $\text{corr}(\Delta B_b, \Delta V_{ij}'') = 0$ ), one may aggregate them over exporters for each importer-bank pair as in:

$$\Delta LC_{ib} = \beta_0 + \beta_1 \Delta B_b + \eta_i + \varepsilon_{ib}, \quad (2)$$

where  $LC_{ib} = \sum_j LC_{ijb}$  and  $\eta_i$  captures all variations collapsed into the importer level. This is exactly the specification that previous studies employed in studying the impact of bank liquidity shocks on lending supply, with  $j$  denoting loan types instead of exporters in the case here (e.g., Khwaja and Mian, 2008; Schnabl, 2012). The estimate from a simple OLS will be biased when the importer-specific shock is correlated with bank-level liquidity shocks (i.e.,  $\text{corr}(\Delta B_b, \eta_i) \neq 0$ ), which is very likely to be the case. One simple example will be that an importer tends to receive a letter of credit from its main bank such that bad shocks on the importer side generate bad news for the bank, worsening the bank's

liquidity shocks (Khwaja and Mian, 2008). Since many importers receive letters of credit from multiple banks in a given period, a novel remedy to address such bias developed in the above-mentioned studies can also be applied to this setting by including importer fixed effects to absorb all importer-level shocks. Therefore, as long as the underlying assumption holds (i.e.,  $\text{corr}(\Delta B_b, \Delta V_{ij}^{\prime\prime}) = 0$ ), running a regression in equation (2) with importer fixed effects will deliver the unbiased estimate of  $\beta_1$ .

However, there are good reasons to believe that importer-exporter-level shocks are correlated with bank-level liquidity shocks (i.e.,  $\text{corr}(\Delta B_b, \Delta V_{ij}^{\prime\prime}) \neq 0$ ), which will invalidate the specification in equation (2) in the first place. Here is one example in which the correlation may arise from the selection process by exporters' banks. In deciding whether to accept a letter of credit, an exporter's bank will prefer a letter of credit issued by a healthier bank. If exporters' banks with relatively weaker balance sheets showed stronger preference patterns and thus were more likely to be self-selected into the relationship with healthier issuing banks, this is likely to generate a negative correlation between importer-exporter-level shocks and the importer's bank-level liquidity shocks (i.e.,  $\text{corr}(\Delta B_b, \Delta V_{ij}^{\prime\prime}) < 0$ ). This is because exporters' banks with relatively weaker balance sheets before the crisis are more likely to have been hit harder by global financial shocks, and thus to have more actively reduced overall exposure to letters of credit, while ex ante healthier issuing banks are more likely to have weathered the storm of liquidity shocks. In short, since the composition of exporters' banks, and hence that of exporters at each importer-bank-level matters, the aggregation process that results in equation (2) is not warranted and should be avoided.<sup>25</sup>

For this reason, the main analysis of this paper will be based on the importer-exporter-bank-level specification in equation (1). Of course, working with the importer-exporter-bank-level data does not automatically solve the problem. It requires addressing importer-exporter specific shocks that would generate downward bias if they were negatively correlated with bank-level liquidity shocks as reasoned above. One natural candidate is including importer-exporter-level fixed effects, which will deliver the unbiased estimate of  $\beta_1$ . This methodology, however, imposes strict restrictions on the sample that only those importer-exporter pairs receiving letters of credit from multiple issuing banks can be included. A great advantage of the current dataset is that, as described in the previous section, it indeed includes many importer-exporter pairs with multiple issuing banks, validating the importer-exporter-level fixed effects strategy.

The final step is to understand why an importer-exporter pair would ever use multiple issuing banks for their letter-of-credit transactions in a given period. One possible explanation is that each bank imposes a credit line for each transaction. If the total value of the transaction to be covered by letters of credit exceeds a credit limit at the first bank, the

---

<sup>25</sup>Khwaja and Mian (2008) and Schnabl (2012) try to address the issue by including the share of each type of loan as additional control variables. The example here suggests that composition matters even within a letter of credit, a narrowly defined type of loan.

importer-exporter pair will apply the remainder to other banks until they get the transaction fully covered by letters of credit. Alternatively, exporters' banks may want to diversify their risk exposures across issuing banks. In either case, the pair will use the first  $n-1$  banks until the value covered by a letter of credit reaches the maximum available (or tolerable) at each bank, and the last  $n$ th bank will take whatever remains.

This implies that it is very likely for the estimate to be seriously biased when this process is not properly accounted for. The reason is as follows. Any given importer-exporter pair will tend to approach the most creditworthy bank first, and use the least creditworthy bank last, not least because of the exporter's bank's preference. At the same time, the amount of letters of credit issued by the first few banks is most likely to have reached credit limits, while it is likely to be below the credit limit at the last one. Suppose now that liquidity shocks occur across banks. Even if the ex ante healthier banks are hit less, they will also be forced to lower credit limits for each line of credit just as—but less than—the other banks. Since lowering credit limits will affect binding cases most (i.e., those letters of credit that have already reached credit limits) and these cases are likely to have been more prevalent in ex ante healthier banks, this will generate bias toward zero, in particular for intensive margin analysis that looks at continuing letter-of-credit issuances.

The opposite will be true for extensive margin analysis that focuses on discontinuing the importer-exporter-bank relationship. When import demand falls, an importer-exporter pair is most likely to drop out of the relationship with the last  $n$ th banks because the pair no longer needs the bank that had mostly provided the final portion of the importer-exporter pair's financing needs. To the extent that the last  $n$ th banks are the weakest banks hit most, this will overestimate the effect of bank liquidity shocks on the banks' decision to discontinue the issuance of letters of credit.

As an attempt to eliminate such bias, we introduce the importer-bank-level credit space variable ( $CS_{ib}$ ), proxied by the inverse of pre-crisis value of letters of credit issued by a bank to each importer ( $1/LC_{ib,pre}$ ) in logarithm. This will capture the relative distance from credit limits, and thus reflect room for additional credits available to an importer at each bank. The higher the pre-crisis value of issued letters of credit is, the smaller the credit space is, and hence the lower the subsequent intensive growth and the probability of exit during crises. Consequently, the main specification that is free from any potential bias is given as:

$$\Delta LC_{ijb} = \beta_0 + \beta_1 \Delta B_b + \beta_2 CS_{ib} + \eta_i + \eta_{ij} + \varepsilon_{ijb}, \quad (3)$$

where  $\beta_0$  is a constant capturing economy-wide shocks,  $\Delta B_b$  is the issuing bank's liquidity shock, and  $CS_{ib}$  is the importer's credit space at each bank as defined above.  $\eta_i$  denotes importer fixed effects, which will be wiped out when  $\eta_{ij}$  is controlled for by importer-exporter fixed effects. The dependent variable is the difference in the log value of the letter

of credit issued by a bank ( $b$ ) for an importer-exporter pair ( $ij$ ) between the pre- and the post-crisis periods for intensive margin analysis, and an exit dummy variable for extensive margin analysis. Bank's liquidity shock is measured by the difference in log deposits at a bank between the two-year period from 2007 to 2009. Lower deposit growth corresponds to larger adverse liquidity shocks. This measure is in line with the literature that has shown that bank deposit is a good measure of bank liquidity during crisis periods (e.g., Khwaja and Mian, 2008; Ivashina and Scharfstein, 2010). Another strand of literature has proxied bank-level liquidity shock with the degree of *ex ante* exposure to foreign lending shocks, based on bank's borrowing from foreign banks in previous periods (Ongena, Peydró, and van Horen, 2013; Paravisini et al, forthcoming). In this spirit, *ex ante* (non)exposure to foreign lending shocks, an indicator variable constructed from the information on borrowings from the international syndicated loan market, will be also used as an alternative measure on bank's liquidity shock. The validity of these measures is supported by, for example, Acharya and Mora (forthcoming) that find that *ex ante* exposed banks experienced weaker deposit growth.

In sum,  $\beta_1$  is the coefficient of interest that is supposed to capture the impact of bank-level liquidity shocks on letters of credit supply.<sup>26</sup> This is the letter-of-credit channel through which financial shocks affect international trade.  $\beta_1 > 0$  (or  $\beta_1 < 0$  for extensive margin analysis) will imply that each importer-exporter pair finds it harder to get letters of credit issued by a bank with bigger adverse liquidity shocks. This will be a result of the fact that (a) a bank hit harder by liquidity shocks reduces the supply of letters of credit more (supply reduction by issuing banks), and (b) an exporter's bank reduces an exposure to a harder-hit bank more (supply reduction by confirming banks).

## 5. Results

### 5.1. Bank Liquidity Shocks and the Supply of Letters of Credit

<Table 5> presents the baseline regression results at the importer-exporter-bank level for intensive, extensive, and overall margin growth, when importer-exporter-level shocks are controlled by importer-exporter fixed effects. In particular, the dependent variable in columns (1)-(3) is constructed as the change in the value of letters of credit issued by a bank  $b$  for an importer-exporter pair  $ij$  between the pre-crisis and the post-crisis periods scaled by the sum of these two values.<sup>27</sup> The sample is restricted to importer-exporter-

<sup>26</sup>Strictly speaking, since bank's liquidity shock is measured by a proxy variable (i.e.,  $\Delta B_b = \delta proxy_b + \xi_b$ ), the estimated coefficient will be actually  $\beta_1 \delta$  rather than  $\beta_1$ .

<sup>27</sup>By construction, this measure is bounded between -1 and 1, unlike the traditional growth measure scaled by the pre-crisis value that is not bounded above. A similar measure is used in Antràs and Foley (forthcoming), Chodorow-Reich (2014).

bank triplets that appear in the pre-crisis period.<sup>28</sup> Column (1) includes bank-level deposit growth only, and column (2) adds the inverse of pre-crisis value of letters of credit issued in logarithm at the importer-bank level. The result does not vary much when the credit space measure is added, perhaps because the opposing effects are offset between intensive and extensive margins. The coefficient on bank liquidity shocks is greater than 1 and statistically significant at the 5 percent level. Given that the estimation is based on within-importer-exporter pair variations, the estimate reflects pure supply effects as long as reduced demand within an importer-exporter pair is in equal proportion across banks after controlling for the credit space. Adding log total liquid assets value as a proxy for pre-crisis bank liquidity level after controlling for a bank size with log total assets value, does not change the size of the estimated coefficient on bank liquidity shocks much, and the qualitative interpretation remains the same (column (3)).<sup>29</sup> The results from columns (1)-(3) reveal significant effects of bank liquidity shocks on the supply of letters of credit, and thus identify one particular channel through which financial shocks are transmitted to real activity, namely the letter-of-credit channel.

Despite its advantage in presenting the overall impact, the dependent variable in columns (1)-(3) in <Table 5> makes it hard to interpret the size of the estimated coefficient. In order to deliver a meaningful interpretation, it is useful to break it down to intensive and extensive margin effects. Columns (4)-(6) in <Table 5> presents the regression results when the dependent variable captures intensive margin growth only. The dependent variable is now the difference in log value of letters of credit issued by bank  $b$  for an importer-exporter pair  $ij$  between the pre-crisis and post-crisis periods. Therefore, the sample is restricted to importer-exporter-bank triplets that appear in both periods among those importer-exporter pairs with multiple issuing banks. The coefficient on bank liquidity shocks is around 3 and statistically significant at the 10 percent level in column (4). Adding the credit space measure raises the size of the coefficient estimate substantially. At the same time, the coefficient on the credit space is estimated to be positive and statistically significant. Thus, column (5) confirms the discussion in the previous section that the closer the previously issued letter of credit is to a credit limit, the larger the subsequent decline is for intensive margin growth, and that failing to control for this will cause downward bias in estimating the effects of bank liquidity shocks on intensive-margin growth of letter-of-credit issuance. Adding additional bank-level controls lowers the estimate slightly (column (6)). The estimated coefficient implies that a 1 percentage point decline in bank liquidity leads to a 4.2 percentage point

<sup>28</sup>This is the subset of the sample with all importer-exporter pairs that received letters of credit from multiple issuing banks for which importer-exporter fixed effect regressions are justified. Further, the sample excludes those importer-bank pairs with a single exporter because it implies  $LC_{ib,pre} = LC_{ijb,pre}$ , which may give rise to potential bias in regressions with this variable, for a similar reason to dynamic panel models in the presence of lagged dependent variable among explanatory variables.

<sup>29</sup>Including additional sets of bank-level controls such as pre-crisis values of total deposits, bank-to-bank deposits, and/or total equity gives qualitatively similar results.



decline in the bank's letter-of-credit issuances.

Turning to extensive margin impact due to exit, columns (7)-(9) in <Table 5> presents the regression results from a linear probability model with an exit dummy as the dependent variable. The sample is the same as the one in columns (1)-(3) that is restricted to importer-exporter-bank triplets that appear in the pre-crisis period. The exit dummy is equal to 1 for those that disappear in the post-crisis period, and 0 otherwise. Column (7) shows the negative and statistically significant coefficient on bank liquidity shocks, implying that a bank with bigger adverse liquidity shocks is more likely to discontinue issuing a letter of credit to a given importer-exporter. Adding the credit space measure moves the estimate to a smaller negative value with its own coefficient being positive and statistically significant (column (8)). The lower the value of pre-crisis issuance, the higher the probability of exit during crises, and failing to control for this overestimates the extensive margin impact of bank liquidity shocks. This is exactly what was discussed in the previous section: the value of letters of credit issued by a bank is not randomly assigned within an importer-exporter pair. Adding pre-crisis bank size and liquidity as additional bank level controls does not change the estimate much.

Despite its clearness, the sheer size of the coefficient in columns (7)-(9) in <Table 5> makes it hard to deliver a reasonable interpretation. For example, column (7) suggests that a 1 percentage point decline in bank deposits leads to an increase in the exit probability by 1.5, which is clearly incorrect given that the probability is defined between 0 and 1. This is a common drawback of the linear probability model. Instead, one can employ the logit model, and the results are reported in <Table 6>. Since the logit model discards observations without any variation in the dependent variable within a group, the sample now includes only those importer-exporter pairs that discontinued receiving letters of credit from at least one bank, but not from all.<sup>30</sup> The qualitative patterns in the coefficient estimate are exactly the same as those found from the linear probability model. The interest here is in the odds ratio reported at the bottom of each column, which gives an easy interpretation addressing the drawback of the linear probability model. Column (1) shows that a 1 percentage point increase in bank liquidity shocks reduces the exit probability by 9 percent (1-0.910). Column (2) shows that controlling for the credit space can correct the overestimated value, and lowers the estimated impact on the exit probability to 7.5 percent (1-0.925). Adding additional bank controls in column (3) gives the estimated impact of 8.4 percent (1-0.916).

This section concludes by presenting the regression results from the importer-bank level data as specified in equation (2), which is exactly the setting in previous studies. <Table 7> replicates the regression results reported in <Table 5>, now at the importer-bank-level with importer fixed effects.<sup>31</sup> In all cases, the coefficient on bank-level liquidity shocks is

<sup>30</sup> Another change made here is that bank deposit growth is now multiplied by 100 in order to deliver a more simple and intuitive interpretation on the odds ratio.

<sup>31</sup> The credit space variable is dropped here because of potential bias prevalent in dynamic panel models

not precisely estimated, and none is statistically significant. This highlights the caution against aggregating the data over exporters to an importer-bank level, or over loan types to a borrower-lender level in more general cases.

### 5.2. *The Supply of Letters of Credit Supply and the Collapse of Imports*

The main results so far have confirmed that bank liquidity shocks lead to a reduction in the issuance of letters of credit. However, it is important to note that the results were all in *relative* terms, and that they do not necessarily identify the presence of the transmission channel from financial shocks to the real economy. Banks hit harder by liquidity shocks reduced the supply of letters of credit *relative to* other banks hit less, to a given importer-exporter pair. It is perfectly plausible that the results were mainly driven by switching across issuing banks within an importer-exporter pair, without any significant effect on total imports by the importer-exporter pair. That is, if banks with smaller liquidity shocks had absorbed the market share of issuance of letters of credit from those with bigger adverse liquidity shocks, the sizable estimate of the letter-of-credit channel would still have been obtained, but there would have been no such transmission of bank liquidity shocks to import transactions.

In order to check this possibility, we aggregate the data to the importer-exporter level, and consider the following specification modified from equation (3):

$$\Delta LC_{ij} = \beta'_0 + \beta'_1 \Delta \bar{B}_{ij} + \beta'_2 \bar{CS}_{ij} + \eta_i + \eta_{ij} + \varepsilon_{ij}, \quad (4)$$

where  $LC_{ib} = \sum_j LC_{ijb}$ , and  $\Delta \bar{B}_{ij}$  is now the average liquidity shocks faced by an importer-exporter's pre-crisis issuing banks. This is measured as the importer-exporter-level average bank liquidity shocks weighted by the pre-crisis value of letters of credit issued by each bank (i.e.,  $\Delta \bar{B}_{ij} = \sum_b (\omega_{ijb} \Delta B_b)$ , with the weight,  $\omega_{ijb} = LC_{ijb,pre} / LC_{ij,pre}$ ). The more an importer-exporter pair had initially received letters of credit from banks with bigger adverse liquidity shocks, the lower  $\Delta \bar{B}_{ij}$  is.<sup>32</sup> Similarly,  $\bar{CS}_{ij}$  is the average credit space for an importer-exporter pair, constructed as the weighted sum of an importer's credit space at each bank (i.e.,  $\bar{CS}_{ij} = \sum_b (\omega_{ijb} CS_{ib})$ ). If the share of letters-of-credit issuance was simply reallocated across banks for import transactions by an importer-exporter pair, the coefficient estimate  $\beta'_1$  will be close to zero because the average liquidity shocks would have no impact on the importer-exporter pair's total letter-of-credit import transactions. On the other hand, if an importer-exporter pair could not easily switch across banks to compensate for letters of credit cut by the hardest-hit banks, one would obtain the coefficient estimate  $\beta'_1$  greater than zero, proving the presence of the transmission channel from bank liquidity shocks to import transactions.

---

with lagged dependent variable.

<sup>32</sup>Other bank controls are constructed in a similar way

Since observations are now at the importer-exporter level and there are many importers that transacted with multiple exporters using letters of credit, importer fixed effects can be included to control for importer-specific demand and credit shocks. This amounts to asking whether an importer reduced imports by letters of credit relatively more from an exporter with which the importer had received letters of credit from banks with larger negative liquidity shocks. Admittedly, running a regression specified in equation (4) implicitly assumes that none of importer-exporter-level shocks is correlated with independent variables, including the average bank liquidity shocks (i.e.,  $corr(\Delta\bar{B}_{ij}, \eta_{ij}) = 0$ ), which may not hold for a similar reason discussed earlier. To the extent that the vulnerability of exporters' banks was relatively homogeneous and thus they behaved similarly within a country, one remedy to reduce potential bias is to include an exporter's country fixed effects along with an importer fixed effects. The regression results are reported in columns (1)-(3) in <Table 8>, when importer and country fixed effects are included. The coefficient estimate of the bank liquidity shocks is big, positive, and statistically significant in all columns. In addition, the size of the coefficient estimate is comparable to the one from importer-exporter-bank level regressions. This is the evidence against the possibility that an importer-exporter pair could turn to another bank when it became hard to receive a letter of credit from a bank.

Still, there is another possibility that might have dampened the letter-of-credit channel through which bank liquidity shocks deliver real effects. If an importer-exporter pair could find alternative sources of trade financing easily, and thus could switch to other types of payment methods from a letter of credit, a reduction in letter-of-credit transactions would not necessarily lead to an overall reduction in import transactions. To see if this is actually what had happened, we replace our dependent variable with total value of import transactions between an importer and an exporter, which now includes, if any, cash-in-advance and open account transactions. A lower coefficient estimate on the average bank liquidity shocks than the ones in previous columns would imply that trading partners could use alternative payment methods when they found it hard to receive letters of credit. The results reported in columns (4)-(6) in <Table 8> show strong evidence against this possibility. The coefficients are not very much different from earlier columns, suggesting that it was not easy for them to find alternative sources of trade financing at the time of bank liquidity shocks.

Overall, the results in <Table 8> strongly confirm that the letter-of-credit channel identified in the previous section has real consequences: bank liquidity shocks are directly passed on to the real economy via a reduction in the supply of letters of credit.

Having addressed major issues in estimating the real impact of bank liquidity shocks, the study turns to another potential concern about the estimation process. Although the main estimation strategy that employs fixed effects at various levels allow for controlling for demand as well as credit shocks in a very careful manner, it is not costless. We are restricted to narrow samples such as importer-exporter pairs with multiple issuing banks

(importer-exporter-bank-level analysis) or importers with multiple exporters and issuing banks (importer-exporter-level analysis). It remains to be seen if the results are the outcome of these inadvertent sample selections or the reflection of the economy-wide phenomenon.

Summary statistics presented earlier in <Table 2> shed some light on the question. At both the importer and importer-exporter levels, the relationship with multiple issuing banks corresponds to larger letter-of-credit transaction values. Similarly, an importer with multiple trading partners tends to have larger letter-of-credit transaction values in terms of both median and mean. To the extent that the value of letter-of-credit transactions proxies the size of the importer, the sample is likely to be skewed toward larger importers. The question is then confined to differential effects of bank liquidity shocks across importer size. The empirical evidence that larger firms are more likely to weather credit shocks than smaller firms as in Khwaja and Mian (2008) would suggest that the analysis will deliver lower bounds for the estimated impact of bank liquidity shocks.

The above conjecture can be checked in a formal way by including *all* importers that undertook letter-of-credit transactions in the pre-crisis period. The strategy is to use the value of total imports per importer as the proxy for the importer size. Although importer fixed effects are no longer valid to control for importer-level shocks, one can investigate if smaller importers excluded in the main analysis had been hit harder by bank liquidity shocks. The bank liquidity shocks term and its interaction term with the importer size will show differential effects of bank liquidity shocks on importer-exporter level import transactions.

<Table 9> summarizes the results.<sup>33</sup> Compared to the regression with importer fixed effects in <Table 8>), the estimated coefficient is slightly lower. The average impact of bank liquidity shocks on letter-of-credit transactions is estimated to be around 2.5 when all importer-exporter pairs are included (column (1)). It is not yet clear if the estimate is lower because smaller firms are included or because importer fixed effects are excluded. Column (2) adds an importer size dummy and its interaction term with the average bank liquidity shocks variable. The importer size dummy is defined as big (Big=1) if an importer is one of top 90 percent of all importers in terms of total import value. The bottom 10 percent of all importers is treated as small (Big=0). The coefficient estimate indicates that the bottom 10 percent of importers were largely and disproportionately affected by bank liquidity shocks relative to the top 90 percent of importers. Smaller importers reduced letter-of-credit imports by 10.6 percentage point in response to a 1 percentage point increase in adverse bank liquidity shocks, whereas bigger importers reduced such imports only by around 2.3 percentage point (10.597-8.253). As we tighten up the importer size dummy by classifying the top 80 percent (column (3)) and top 50 percent (column (4)) importers as

---

<sup>33</sup>For a similar concern on potential bias in the presence of lagged dependent variable, the weighted average of credit space variable is dropped because there are a few importers with only one bank and a single exporter in the sample (i.e.,  $\overline{LC}_{ij,pre} = LC_{ij,pre}$ ).

big, the coefficient estimate of the average bank liquidity shocks decreases to 6.5 and 5.1 respectively, and bigger importers constantly exhibit lower coefficient estimates, albeit the difference is now statistically insignificant in column (4). Exactly the same patterns are found when we look at the growth in total imports by importer-exporter pairs (columns (5)-(8)). This is consistent with the idea that smaller firms were affected by adverse liquidity shocks even more than bigger firms, and the main estimation strategy that focuses on bigger firms is likely to underestimate the impact of bank liquidity shocks.

### 5.3. Robustness Checks

This section performs three additional robustness checks to corroborate the main findings of the paper, first by using an alternative measure of bank liquidity shocks, second by modifying the time frame to avoid a seasonality issue, and lastly by incorporating sector-level data to account for sector-specific demand shifters.

Other than bank deposit growth, recent studies have extensively used information on bank's borrowing from foreign banks as a proxy for bank liquidity shocks (e.g., Paravisini et al, forthcoming; Ongena et al, 2013). The more a bank relied on foreign borrowings in the past, the more it is exposed to liquidity shocks induced by foreign lending supply shocks. This approach looks especially valid for emerging countries during the recent financial crisis because financial shocks were transmitted to these countries mainly via cross-border lending and/or local lending by subsidiaries/branches of foreign banks in advanced countries.<sup>34</sup> As briefly introduced in section 3, information on banks' borrowing from foreign syndicated lenders obtained from the Dealogic's Loan Analytics database is used to construct an indicator variable that captures each bank's *ex ante* (non)exposure to foreign lending shocks as an alternative measure of liquidity shocks. Specifically, 5 banks that had borrowed from the international syndicated loan market at least once during the two-year period from 2005 and 2007 are classified as exposed banks with 0 for the non-exposure indicator variable. Other 8 banks that had not borrowed any international syndicated loans during the same period are classified as unexposed for which the non-exposure indicator variable turns on. <Table 10> replicates <Table 5>, the baseline regression at the importer-exporter-bank level, with this alternative measure of bank liquidity shocks. All columns, albeit a coefficient estimate is marginally insignificant in column (9), confirm that those banks that had been exposed to foreign lending shocks reduced supply of letters of credit relatively more than unexposed banks. Letters-of-credit import transaction by an importer-exporter pair with an exposed issuing bank declined, on average, up to 80 percentage point more relative to the one with an unexposed issuing bank (column (6)). Similarly, a letter of credit issued by an exposed bank was more likely to be discontinued (columns (7)-(9)). Likewise, <Table 11> replicates the baseline regression at the importer-exporter level, and the results

---

<sup>34</sup>See references in footnote 1.

show exactly the same pattern as reported in <Table 8>. The non-exposure variable at the importer-exporter-level is now defined as 0 if an importer-exporter pair had received a letter of credit from at least one exposed bank in the pre-crisis period, and 1 otherwise. Coefficient estimates in all columns are comparable to those in columns (4)-(6) in <Table 10>. This implies that importer-exporter pairs that had letters of credit issued by exposed banks indeed experienced larger reductions in import transactions, and it was not easy to switch to other unexposed issuing banks or other types of financing during the crisis period.

The second exercise attempts to address a seasonality issue that may arise from the unbalanced time frame set in the baseline analysis. Since the global financial crisis occurred at the beginning of the fourth quarter in 2008 with the Lehman collapse and the trade collapse continued until the second quarter of 2009, it is natural to compare the first three quarters of 2008 to the subsequent three quarters. This is also how the pre- and post-crisis periods are defined in Paravisini et al (forthcoming). However, it is not implausible that, for example, a certain product's shipment is concentrated in the first three quarters every year. Further, one can argue that a certain bank may have been specialized in issuing letters of credit for this product. Depending on whether this bank happened to have suffered from liquidity shocks during the crisis, the results thus far could have overestimated or underestimated the effects of bank liquidity shocks on letters of credit import transactions. To check if the seasonality indeed played a role in the baseline analysis, this section ends by presenting <Table 12> that replicates <Table 5> with the post-crisis being re-defined as the first three quarters of 2009. The results are very similar to the baseline results and confirm that the main findings of the paper are not driven by unadjusted seasonality.

Lastly, sector-specific demand shocks could have mattered. If banks were specialized in issuing letters of credit in support of certain commodity imports, and bank-level shocks happened to be systematically related to such specialized sector-level demand shocks, the estimated results could have been driven by the latter instead of the former. The baseline estimation ignored this possibility and worked with importer-exporter-bank level data, but the original dataset allows for exploring sector-level information as well. Defining the sector at HS 2digit-level, <Table 13> replicates <Table 5> with importer-exporter-sector-bank level data. Several things to note: (i) the larger sample size reflects that some importer-exporter pairs transact products from multiple sectors, and (ii) the identification is feasible because importer-exporter pairs use letters of credit from multiple issuing banks even for the same sector transactions. Overall, qualitatively similar results hold for the coefficient estimate of bank-level deposit growth term, confirming that the baseline results were not driven by sector-level demand shocks.<sup>35</sup>

---

<sup>35</sup>It is also not surprising to find somewhat different results for the credit space variable (i.e., the inverse of importer-bank level LC in log) because the argument for the credit space variable discussed earlier is likely to be more relevant at the trading partner level (i.e., importer-exporter level) as a whole than at the importer-exporter-sector level, particularly when trading partners transact multiple sector goods as in the

#### 5.4. *Quantifying the Relative Role of Bank Liquidity Shocks in the Import Collapse*

Given the results presented thus far, it is tempting to further explore the estimates in order to gauge the relative role of trade finance in the great trade collapse. Although this is not an easy task because neither import demand shocks nor trade finance supply shocks are fully observable, we nevertheless apply several methods to quantify the relative role of trade finance in the import collapse, albeit only suggestive, for the sample of importer-exporter pairs included in regressions reported in <Table 8>.

The basic idea is to calculate the hypothetical aggregate imports growth that would have been obtained if trade finance shocks had been the only factor causing the trade collapse, and compare it to actual aggregate import growth. The hypothetical value can be obtained by (a) collecting importer-exporter level predicted growth rates from a simple OLS regression with the average bank liquidity shock variable; (b) backing out importer-exporter level predicted import values in the post-crisis period; and (c) summing them up over importer-exporter pairs to calculate the aggregate import growth rate. We choose to run a simple OLS regression because it is the correct model under the hypothetical scenario, and this will allow us to be conservative because a simple OLS regression underestimates the impact of bank liquidity shocks.<sup>36</sup> The resulting hypothetical growth rate for the sample is -6.7 percent, which is about 35 percent of the actual growth rate (-19.3 percent).

Alternatively, we can follow the methodology employed in Mian and Sufi (forthcoming) in order to remove economy wide shocks that are included in the above calculation but may not necessarily be attributable to trade finance shocks. This requires a simple fix for the above procedure, which amounts to subtracting the predicted growth rates for the least affected importer-exporter pair from the importer-exporter-level predicted growth rates. Following their approach to remain conservative, we pick the importer-exporter pair with the 95th percentile of average bank deposit growth (i.e., the importer-exporter pair with the top 5 percentile of predicted import growth (-1.6 percent)) as the least affected. This exercise yields a hypothetical growth rate of -5.2 percent, implying that about 27 percent of the actual import collapse is explained by bank liquidity shocks.

Yet another possible approach is to use the regression result in column (1) in <Table 8> by collecting predicted values excluding the ones from importer fixed effects. This is supposed to deliver aggregate import growth due only to bank liquidity shocks with the idea that importer fixed effects capture any other demand shock operating at the importer level. Again, this will deliver a conservative quantification because some portions of importer fixed effects would include importer-level credit shocks attributable to the trade finance channel. This approach gives the predicted aggregate import growth rate of around -5.2 percent,

---

current data.

<sup>36</sup>The estimated coefficient on bank liquidity shocks from an OLS regression is 1.538 with the standard error 1.033.

close to the second figure above.

## 6. Conclusion

The main goal of this paper has been to identify and provide a precise estimate of the direct impact of bank liquidity shocks on real economic activity by exploring letter-of-credit import transactions in Colombia during the 2008-2009 global financial crisis. The detailed dataset on letter-of-credit transactions allows for exploiting within-importer-exporter variations across issuing banks. The study finds substantial effects of bank liquidity shocks on import transactions via letters of credit. The estimate suggests that adverse bank liquidity shocks played a significant role in the collapse in import transactions via letters of credit in Colombia.

The contribution of this paper is important in several ways. First, it minimizes the potential omitted variable bias by employing highly disaggregated data. Second, the estimates fully capture the real impact of letter-of-credit supply shocks thanks to their non-fungible nature. Third, it provides a suggestive quantitative evaluation of the role of trade finance in the great trade collapse.

The process of checking the validity of the estimates revealed the interesting fact that smaller importers are hit by the bank liquidity shock more severely than bigger importers. This finding may suggest an additional mechanism that brings about distributional consequences of financial crises. To the extent that imported intermediate inputs are important determinants of productivity, financial crises can generate unequal productivity shocks across firms. This will be an interesting topic for future research.

## References

- Acharya, Viral, and Nada Mora, forthcoming, “A Crisis of Banks as Liquidity Providers,” *Journal of Finance*.
- Afonso, Gara, Anna Kovner, and Antoinette Schoar, 2011, “Stressed, not Frozen: The Federal Funds Market in the Financial Crisis,” *Journal of Finance*, Vol. 66, No. 4, pp. 1109–1139.
- Ahn, JaeBin, 2011, “A Theory of Domestic and International Trade Finance,” IMF Working Paper 11/262 (Washington: International Monetary Fund).
- Ahn, JaeBin, 2014, “Understanding Trade Finance: Theory and Evidence from Transaction-level Data,” (unpublished; Washington: International Monetary Fund).
- Ahn, JaeBin, Mary Amiti, and David Weinstein, 2011, “Trade Finance and the Great Trade



- Collapse,” *American Economic Review: Papers and Proceedings*, Vol. 101, No. 3, pp. 298-302.
- Allen, Hryckiewicz, Kowalewski, and Tümer-Alkan, 2010, “Transmission of Bank Liquidity Shocks in Loan and Deposit Markets: The Role of Interbank Borrowing and Market Monitoring,” Wharton Financial Institutions Center Working Paper 10-28.
- Amiti, Mary and David Weinstein, 2011, “Exports and Financial Shocks,” *Quarterly Journal of Economics*, Vol. 126, No. 4, pp. 1841-1877.
- Amiti, Mary and David Weinstein, 2013, “How Much Do Bank Shocks Affect Investment? Evidence from Matched Bank-Firm Loan Data,” NBER Working Paper No. 18890 (Cambridge, Massachusetts: National Bureau of Economic Research).
- Antràs, Pol and Fritz Foley, forthcoming, “Poultry in Motion: A Study of International Trade Finance Practices,” *Journal of Political Economy*.
- Ashcraft, Adam, 2005, “Are Banks Really Special? New Evidence from the FDIC-Induced Failure of Healthy Banks,” *American Economic Review*, Vol. 95, No. 5, pp. 1712-30.
- Asmundson, Irena, Thomas Dorsey, Armine Khachatryan, Iona Niculcea, and Mika Saito, 2011, “Trade and Trade Finance in the 2008–09 Financial Crisis,” IMF Working Paper 11/16 (Washington: International Monetary Fund).
- Auboin, Marc and Martina Engemann, forthcoming, “Testing the Trade Credit and Trade Link: Evidence from Data on Export Credit Insurance,” *Review of World Economics*.
- Baldwin, Richard, 2009, *The Great Trade Collapse: Causes, Consequences and Prospects*, VoxEU.Org Books, Centre for Economic Policy Research.
- Bank for International Settlements, 2011, “Treatment of Trade Finance under the Basel Capital Framework,” Basel Committee on Banking Supervision, Basel.
- Berman, Nicolas, Jose de Sousa, Philippe Martin, and Thierry Mayer, 2012, “Time to Ship During Financial Crises,” *NBER International Seminar on Macroeconomics*, 9(1), 225 - 260 (University of Chicago Press)
- Berman, Nicolas and Philippe Martin, 2012, “The Vulnerability of Sub-Saharan Africa to the Financial Crises: The Case of Trade?” *IMF Economic Review*, Vol. 60, No. 3, pp. 329–364.
- Bernanke, Ben and Alan Blinder, 1992, “The Federal Funds Rate and the Channels of Monetary Transmission,” *American Economic Review*, Vol. 82, No. 4, pp. 901-21.

- Bricongne, Jean-Charles, Lionel Fontagné, Guillaume Gaulier, Daria Taglioni, and Vincent Vicard, 2012, "Firms and the global crisis: French exports in the turmoil," *Journal of International Economics*, Vol. 87, No. 1, pp 134-146.
- Cetorelli, Nicola, and Linda S. Goldberg, 2011, "Global Banks and International Shock Transmission: Evidence from the Crisis," *IMF Economic Review*, Vol. 59, No. 1, pp. 41-46.
- Cetorelli, Nicola, and Linda S. Goldberg. 2012. "Follow the Money: Quantifying Domestic Effects of Foreign Bank Shocks in the Great Recession," *American Economic Review*, Vol. 102, No. 3, pp. 213-18.
- Chodorow-Reich, Gabriel, 2014, "The Employment Effects of Credit Market Disruptions: Firm-level Evidence from the 2008-09 Financial Crisis," *Quarterly Journal of Economics*, Vol. 129, No. 1, pp. 1-59.
- Chor, Davin, and Kalina Manova, 2012, "Off the Cliff and Back: Credit Conditions and International Trade during the Global Financial Crisis," *Journal of International Economics*, Vol. 87, No. 1, pp. 117–133.
- Claessens, Stijn, Tong, Hui, and Wei, Shang-Jin, 2012, "From the Financial Crisis to the Real Economy: Using Firm-level Data to Identify Transmission Channels," *Journal of International Economics*, Vol. 88, No. 2, pp. 375-387.
- De Haas, Ralph. and Iman Van Lelyveld, forthcoming, "Multinational Banks and the Global Financial Crisis: Weathering the Perfect Storm?," *Journal of Money, Credit, and Banking*.
- De Haas, R. and N. Van Horen (2013), "Running for the Exit? International Bank Lending During a Financial Crisis," *Review of Financial Studies*, Vol. 26, No. 1, pp. 244-285.
- Eaton, Jonathan, Samuel Kortum, Brent Neiman, and John Romalis, 2011, "Trade and the Global Recession," NBER Working Paper No. 16666 (Cambridge, Massachusetts: National Bureau of Economic Research).
- Eck, Katharina, Martina Engemann, and Monika Schnitzer, 2012, "How Trade Credits Foster International Trade," Bavarian Graduate Program in Economics, Working Papers 116.
- Eck, Katharina, Martina Engemann, and Monika Schnitzer, forthcoming, "Trade Credits and Bank Credits in International Trade: Substitutes or Complements?," *The World Economy*.

- Feenstra, Robert, Zhiyuan Li, and Miaojie Yu, 2014. "Exports and Credit Constraints Under Incomplete Information: Theory and Evidence from China" *Review of Economics and Statistics*, Vol.96, No. 4, pp. 729-744.
- Felbermayr, Gabriel and Erdal Yalcin, 2013, "Export Credit Guarantees and Export Performance: An Empirical Analysis for Germany," *The World Economy*, Vol. 36, No. 8, pp. 967-999.
- Giannetti, Mariassunta and Luc Laeven, 2012. "The Flight Home Effect: Evidence from the Syndicated Loan Market During Financial Crises," *Journal of Financial Economics*, Vol. 104, No.1, pp. 23-43.
- Gopinath, Gita and Brent Neiman, 2014. "Trade Adjustment and Productivity in Large Crises," *American Economic Review*, Vol. 104, No. 3, pp. 793-831.
- Hoefele, Andreas, Tim Schmidt-Eisenlohr, and Zhihong Yu (2012), "Payment Choice in International Trade: Theory and Evidence from Cross-country Firm Level Data," (unpublished; Oxford, England: University of Oxford).
- Ivashina, Victoria and David Scharfstein, 2010. "Bank Lending During the Financial Crisis of 2008," *Journal of Financial Economics*, Vol. 97, No. 3, pp. 319-338.
- Iyer, Rajkamal, José-Luis Peydró, Samuel Lopes, and Antoinette Schoar, 2014, "The Interbank Liquidity Crunch and the Firm Credit Crunch: Evidence from the 2007-09 Crisis," *Review of Financial Studies*, Vol. 27, No. 1, pp.347-372.
- Kalemli-Ozcan, Sebnem, Herman Kamil, and Carolina Villegas-Sanchez, 2011, "What Hinders Investment in the Aftermath of Financial Crises: Insolvent Firms or Illiquid Banks?," NBER Working Paper No. 16528 (Cambridge, Massachusetts: National Bureau of Economic Research).
- Kashyap, Anil and Jeremy Stein, 2000, "What Do a Million Observations on Banks Say About the Transmission of Monetary Policy?," *American Economic Review*, Vol. 90, No. 3, pp. 407-28.
- Khwaja, Asim, and Atif Mian (2008), "Tracing the Impact of Bank Liquidity Shocks: Evidence from an Emerging Market," *American Economic Review*, Vol. 98, No.4, pp. 1413-1442.
- Levchenko, Andrei, Logan Lewis, and Linda Tesar, 2011, "The Role of Trade Finance in the U.S. Trade Collapse: a Skeptic's View," in Jean-Pierre Chauffour and Mariem Malouche, eds, *Trade Finance During the Great Trade Collapse*, pp. 133-147, Washington, DC: The World Bank.

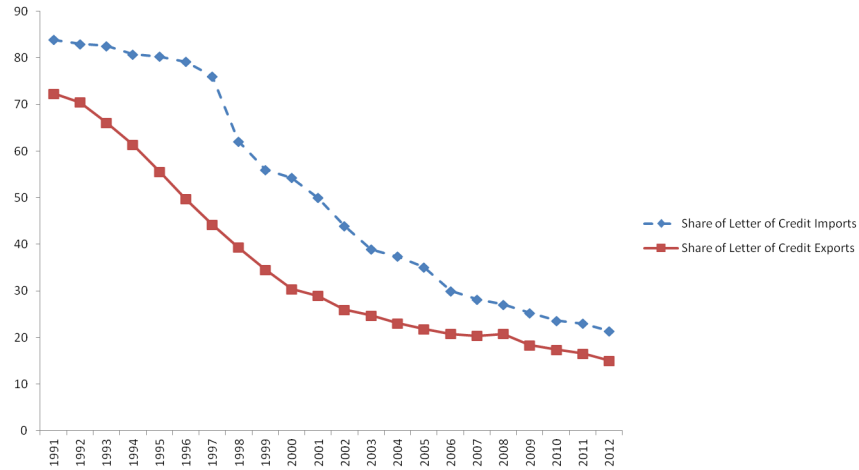
- Mian, Atif, and Amir Sufi, forthcoming, "What Explains High Unemployment? The Aggregate Demand Channel," *Econometrica*.
- Niepmann, Friederike and Tim Schmidt-Eisenlohr, 2013a, "International Trade, Risk and the Role of Banks," Federal Reserve Bank of New York Staff Reports, 633.
- Niepmann, Friederike and Tim Schmidt-Eisenlohr, 2013b, "No Guarantees, No Trade: How Banks Affect Export Patterns," Federal Reserve Bank of New York Staff Reports, 659.
- Olsen, Morton, 2010, "Banks in International Trade: Incomplete International Contract Enforcement and Reputation," (unpublished; IESE Business School working paper).
- Ongena, Steven, José-Luis Peydró, and Neeltje van Horen, 2013, "Shocks Abroad, Pain at Home? Bank-Firm Level Evidence on Financial Contagion during the Recent Financial Crisis," mimeo, Tilburg University, Universitat Pompeu Fabra, and De Nederlandsche Bank.
- Paravisini, Daniel, 2008, "Local Bank Financial Constraints and Firm Access to External Finance," *Journal of Finance*, Vol. 63, No. 5, pp. 2161-2193.
- Paravisini, Daniel, Veronica Rappoport, Philipp Schnabl, and Daniel Wolfenzon, forthcoming, "Dissecting the Effect of Credit Supply on Trade: Evidence from Matched Credit-Export Data," *Review of Economic Studies*.
- Peek, Joe and Eric Rosengren, 1997, "The International Transmission of Financial Shocks: The Case of Japan," *American Economic Review*, Vol. 87, No. 4, pp. 495-505.
- Peek, Joe and Eric Rosengren, 2000, "Collateral Damage: Effects of the Japanese Bank Crisis on Real Activity in the United States," *American Economic Review*, Vol. 90, No. 1, pp. 30-45.
- Peek, Joe and Eric Rosengren, and Geoffrey Tootell, 2003, "Identifying the Macroeconomic Effect of Loan Supply Shocks," *Journal of Money, Credit and Banking*, Vol. 35, No. 6, pp. 931-946.
- Popov, Alexander and Gregory Udell, 2012, "Cross-border Banking, Credit Access, and the Financial Crisis," *Journal of International Economics*, Vol. 87, No. 1, pp. 147-161.
- Puri, Manju, Jörg Rocholl, Sascha Steffen, 2011, "Global Retail Lending in the Aftermath of the US Financial Crisis: Distinguishing Between Supply and Demand Effects," *Journal of Financial Economics*, Vol. 100, No. 3, pp. 556-578.
- Schmidt-Eisenlohr, Tim, 2013, "Towards a Theory of Trade Finance," *Journal of International Economics*, Vol. 91, No. 1, pp. 96-112.

Schnabl, Philipp, 2012, "The International Transmission of Bank Liquidity Shocks: Evidence from an Emerging Market," *Journal of Finance*, Vol. 67, No.3, pp. 897-932.

Shleifer, Andrei and Robert Vishny, 2011, "Fire Sales in Finance and Macroeconomics," *Journal of Economic Perspectives*, Vol. 25, No. 1, pp. 29-48.

Van der Veer, Koen, forthcoming, "The Private Credit Insurance Effect on Trade," *Journal of Risk and Insurance*.

Figures



Note: This figure presents time-series changes in the share of letter of credit transactions in South Korean trade. Source: Korea Customs Service. Data are available at the website of The Korea International Trade Association ([http://www.kita.net/statistic/index\\_eng.jsp](http://www.kita.net/statistic/index_eng.jsp)).

Figure 1: Share of Letter-of-Credit Transactions in South Korean Trade from the period 1991-2012

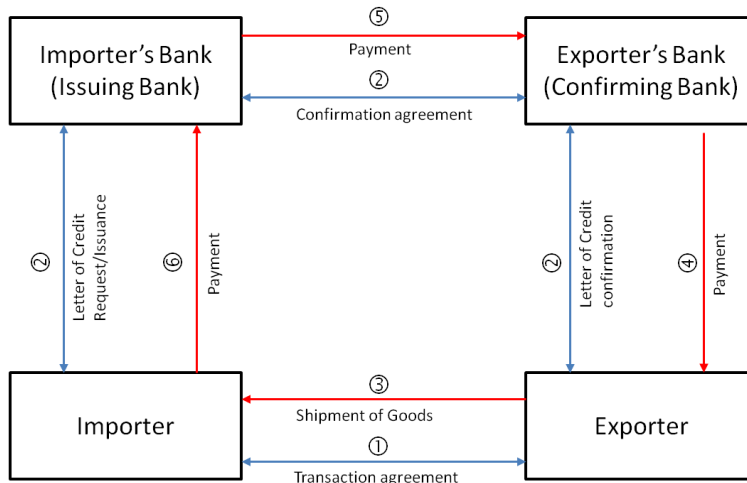
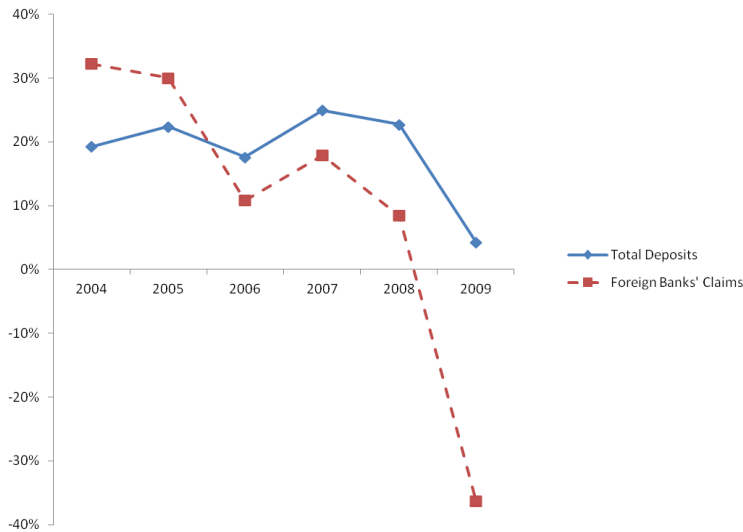
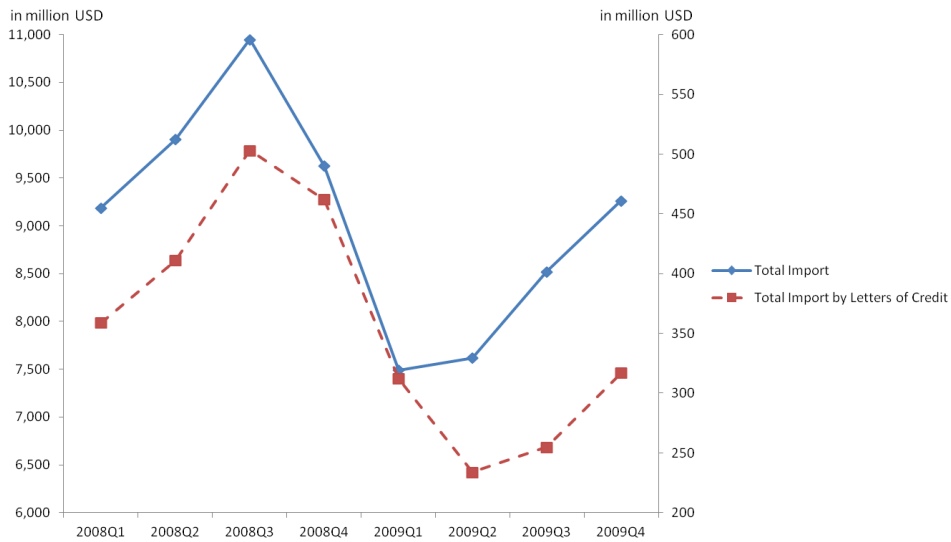


Figure 2: An Illustration of a Letter-of-Credit Transaction



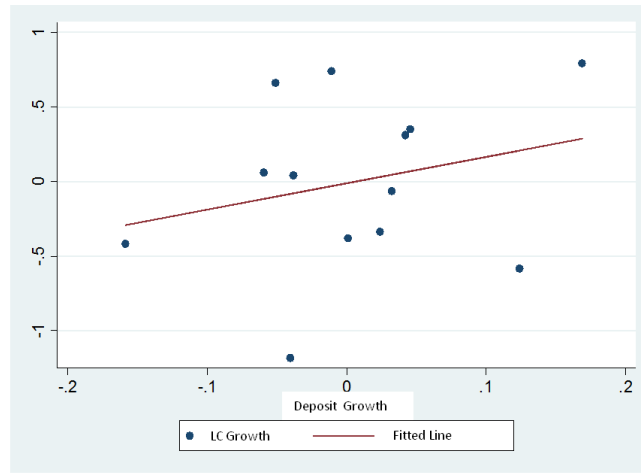
Note: This figure depicts annual growth in total deposits at financial institutions in Colombia (solid line), and foreign banks' claims on Colombian banks (dashed line). Total deposits are summed over financial institutions listed in the Bankscope database, and foreign banks' claims data are from the BIS database.

Figure 3: Annual Growth in Total Deposits and Foreign Banks' Claims in Colombia



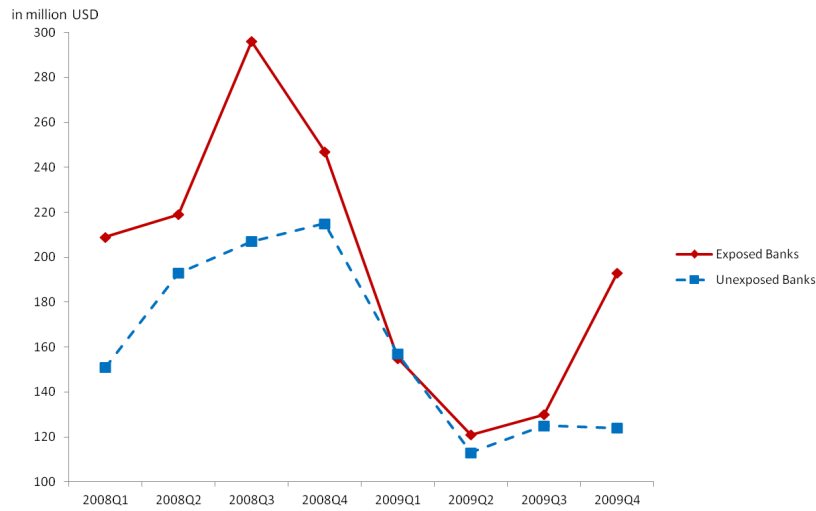
Note: This figure depicts quarterly total imports (solid line, left axis), and total imports by letters of credit (dashed line, right axis) in Colombia.

Figure 4: Quarterly Total Imports and Quarterly Total Imports by Letters of Credit



Note: This figure provides scatter plots between bank-level deposit growth between 2007 and 2009 (x-axis), and bank-level growth in the issuance of letters of credit between the pre- and post-crisis periods (y-axis). Both are expressed as the deviation from the mean.

Figure 5: Bank-Level Deposit Growth and Growth in the Issuance of Letters of Credit



Note: This figure depicts quarterly total letters-of-credit imports issued by 5 Exposed banks (solid line) and 8 Unexposed banks (dashed line) in Colombia.

Figure 6: Quarterly Total Letters-of-Credit Imports Issued by Exposed and Unexposed Banks



## Tables

	2008	2009
Value (million USD)	1,736	1,116
<i>Percentage of total</i>	4.41%	3.42%
Transactions	42,179	34,253
<i>Percentage of total</i>	2.39%	2.10%

Note: This table provides the share of letter-of-credit transactions in total Colombian imports in terms of value and number of transactions.

Table 1: Share of Letter-of-Credit Transactions in Total Imports

Panel A	All		Continue		Exit	
	All	Bank>1	All	Bank>1	All	Bank>1
Mean (1000 USD)	269	446	591	892	161	187
Median (1000 USD)	54	75	93	130	47	58
Obs	4,706	1,823	1,189	670	3,517	1,153

Panel B	Importer			Importer-Country			Importer-Exporter	
	All	Bank>1	Exporter>1	All	Bank>1	Exporter>1	All	Bank>1
Mean (1000 USD)	1,058	2,937	2,330	596	1,690	1,246	349	1,090
Median (1000 USD)	82	420	359	78	325	288	58	213
Number	1,197	351	436	2,125	542	496	3,629	746
Obs	4,706	3,498	3,838	4,706	2,769	2,744	4,706	1,823

Note: Panel A provides summary statistics at importer-exporter-bank level. The sample includes all importer-exporter-bank triplets that appear in the pre-crisis period. The sample is classified as Continue if an importer-exporter pair used letter of credit from an issuing bank in both the pre- and the post-crisis periods. The sample is classified as Exit if an importer-exporter pair used letter of credit from an issuing bank in the pre-crisis period but not in the post-crisis periods. Bank>1 denotes observations by importer-exporter pairs that used multiple issuing banks in the pre-crisis period. Panel B provides summary statistics for the same sample but at differing levels: importer, importer-country, and importer-exporter-level. Bank>1 at the importer-level section refers to observations by importers that used multiple issuing banks in the pre-crisis period. Exporter>1 are observations by importers that transacted with multiple exporters in the pre-crisis period. Definitions hold similarly for importer-country-level and importer-exporter-level sections.

Table 2: Summary Statistics for Letter-of-Credit Transactions

	Bank=1	Bank=2	Bank=3	Bank=4	Bank=5	Bank=6	Bank=7
rank=1	100.00%	69.86%	61.87%	56.68%	54.61%	56.65%	82.65%
rank=2		29.68%	26.37%	23.12%	23.17%	25.78%	12.38%
rank=3			11.54%	12.85%	11.32%	13.82%	3.02%
rank=4				7.35%	7.06%	2.87%	1.05%
rank=5					3.84%	0.54%	0.46%
rank=6						0.34%	0.34%
rank=7							0.10%

Note: This table describes the pattern of issuing bank choices by importer-exporter pairs in the pre-crisis period. Each row corresponds to the share of letter of credit issued by the  $n$ th most used bank averaged over importer-exporter pairs. Each column restricts the sample to importer-exporter pairs that used  $n$  issuing banks.

Table 3: Pattern of Issuing Bank Choices

	Mean	Median	S.D
Growth in letter-of-credit issuance (pre-post)	-0.15	-0.11	0.58
Growth in Loans (2007-09)	0.21	0.25	0.15
Growth in Loans (2007-08)	0.16	0.15	0.08
Growth in Loans (2008-09)	0.04	0.07	0.12
Growth in Deposits (2007-09)	0.23	0.22	0.08
Growth in Deposits (2007-08)	0.17	0.17	0.08
Growth in Deposits (2008-09)	0.08	0.06	0.11
Assets in 2007 (in log)	9.22	9.05	0.77
Equity/Assets Ratio in 2007	0.10	0.09	0.03
Liquid Assets/Assets Ratio in 2007	0.17	0.17	0.10

Note: This table provides summary statistics for bank-level variables. The data come from the Bankscope database except for the letter-of-credit data calculated from the import transactions data. The sample includes 13 banks that provided letters of credit for import transactions in Colombia in the pre-crisis period and for which balance sheets data are available at the Bankscope database. Growth is measured as the difference in log. S.D = standard deviation.

Table 4: Summary Statistics for Bank-Level Variables

Dependent variable	$(LC_{ijb,post}-LC_{ijb,pre})/(LC_{ijb,post}+LC_{ijb,pre})$			$\Delta \ln(LC)_{ijb}$			EXIT=1 <sub>ijb</sub>		
	(1)	(2)	(3)	(4)	(5)	(6)	(7)	(8)	(9)
$\Delta \ln(\text{Deposit})_b$	1.738 ** (0.692)	1.445 ** (0.615)	1.461 ** (0.513)	3.321 * (1.682)	4.361 * (2.118)	4.224 * (2.005)	-1.549 *** (0.457)	-1.036 *** (0.309)	-1.049 *** (0.263)
$\ln(1/LC)_{ib,pre}$		-0.064 * (0.034)	-0.058 * (0.033)		0.282 ** (0.115)	0.305 ** (0.115)		0.111 *** (0.024)	0.108 *** (0.024)
$\ln(\text{Assets})_{b,pre}$			0.103 (0.115)			0.275 (0.179)			-0.065 (0.094)
$\ln(\text{Liquid Assets})_{b,pre}$			-0.163 (0.094)			-0.401 (0.228)			0.101 (0.080)
Fixed effects	imp-exp	imp-exp	imp-exp	imp-exp	imp-exp	imp-exp	imp-exp	imp-exp	imp-exp
Obs	1,437	1,437	1,437	381	381	381	1,437	1,437	1,437
# of imp-exp pairs	657	657	657	168	168	168	657	657	657
# of importers	177	177	177	67	67	67	177	177	177
Adj R squared	0.187	0.204	0.217	0.052	0.105	0.110	0.263	0.335	0.340

Note: The dependent variable in column (1)-(3) is the importer-exporter-bank-level growth in the value of letter-of-credit transactions measured as the change in the value of letter of credit transactions between the pre-crisis and the post-crisis period scaled by the sum of the value of letter-of-credit transactions in these two periods. The dependent variable in columns (4)-(6) is the importer-exporter-bank-level growth in the value of letter-of-credit transactions measured as the change in the log value of letter-of-credit transactions between the pre-crisis and the post-crisis period. The dependent variable in columns (7)-(9) is the importer-exporter-bank-level dummy variable equal to 1 if an importer-exporter pair discontinued letter-of-credit transactions supported by a bank in the post-crisis period, and 0 otherwise. The baseline sample in columns (1)-(3) and (7)-(9) includes all importer-exporter pairs for which letter-of-credit transactions were undertaken by multiple issuing banks in the pre-crisis period, but excludes importer-bank pairs with only one exporter. The sample in columns (4)-(6) is the subset of the baseline sample for which the change in log value is well defined. Independent variables are the bank-level growth in the deposits between two periods, the inverse of pre-crisis value of letters of credit issued at the importer-bank-level in logarithm, and bank's pre-crisis total and liquid asset value in logarithm. All columns include importer-exporter fixed effects. Standard errors in parentheses are clustered at the bank level. Significance: \* 10 percent; \*\* 5 percent; \*\*\* 1 percent.

Table 5: Impact of Bank Liquidity Shocks on Letter-of-Credit Issuance: Importer-Exporter-Bank Level

Dependent variable	EXIT=1 <sub>ijb</sub>		
	(1)	(2)	(3)
$\Delta \ln(\text{Deposit})_b \times 100$	-0.094 *** (0.016)	-0.078 *** (0.018)	-0.088 *** (0.019)
$\ln(1/LC)_{ib,pre}$		0.801 *** (0.107)	0.760 *** (0.109)
$\ln(\text{Assets})_{b,pre}$			-0.671 * (0.368)
$\ln(\text{Liquid Assets})_{b,pre}$			0.996 *** (0.358)
Fixed effects	imp-exp	imp-exp	imp-exp
Obs	628	628	628
Odds Ratio	0.910 *** (0.014)	0.925 *** (0.016)	0.916 *** (0.017)

Note: The dependent variable is the importer-exporter-bank-level dummy variable equal to 1 if an importer-exporter pair discontinued letter-of-credit transactions supported by a bank in the post-crisis period, and 0 otherwise. The sample is the subset of all importer-exporter pairs for which letter-of-credit transactions were undertaken by multiple issuing banks in the pre-crisis period, which is restricted to those that have any variation in the dependent variable within importer-exporter pair. Independent variables are the bank-level growth in the deposits between two periods, the inverse of pre-crisis value of letters of credit issued at the importer-bank-level in logarithm, and bank's pre-crisis total and liquid asset value in logarithm. All columns include importer-exporter fixed effects. Standard errors in parentheses are clustered at the bank level. Significance: \* 10 percent; \*\* 5 percent; \*\*\* 1 percent.

Table 6: Impact of Bank Liquidity Shocks on Letter-of-Credit Issuance: Importer-Exporter-Bank Level Extensive Margin (Logit)

Dependent variable	$(LC_{ib,post}-LC_{ib,pre})/(LC_{ib,post}+LC_{ib,pre})$		$\Delta \ln(LC)_{ib}$		EXIT=1 <sub>ib</sub>	
	(1)	(2)	(3)	(4)	(5)	(6)
$\Delta \ln(\text{Deposit})_{ib}$	0.473 (0.480)	0.525 (0.493)	1.244 (0.935)	1.383 (0.804)	-0.373 (0.444)	-0.433 (0.479)
$\ln(\text{Assets})_{b,pre}$		0.018 (0.066)		0.055 (0.211)		-0.016 (0.048)
$\ln(\text{Liquid Assets})_{b,pre}$		0.025 (0.051)		-0.116 (0.142)		-0.046 (0.048)
Fixed effects	importer	importer	importer	importer	importer	importer
Obs	1,148	1,148	441	441	1,148	1,148
# of importers	466	466	151	151	466	466
Adj R squared	0.162	0.164	0.054	0.050	0.262	0.272

Note: The dependent variable in columns (1)-(3) is the importer-bank-level growth in the value of letter-of-credit transactions measured as the change in the value of letter-of-credit transactions between the pre-crisis and the post-crisis period scaled by the sum of the value of letter-of-credit transactions in these two periods. The dependent variable in columns (4)-(6) is the importer-bank-level growth in the value of letter-of-credit transactions measured as the change in the log value of letter-of-credit transactions between the pre-crisis and the post-crisis period. The dependent variable in columns (7)-(9) is the importer-bank-level dummy variable equal to 1 if an importer-exporter pair discontinued letter-of-credit transactions supported by a bank in the post-crisis period, and 0 otherwise. The baseline sample in columns (1)-(3) and (7)-(9) includes all importers for which letter of credit transactions were undertaken by multiple issuing banks in the pre-crisis period, whereas the sample in columns (4)-(6) is the subset of the baseline sample for which the change in log value is well defined. Independent variables are the bank-level growth in the deposits between two periods, and bank's pre-crisis total and liquid asset value in logarithm. All columns include importer fixed effects. Standard errors in parentheses are clustered at the bank level. Significance: \* 10 percent; \*\* 5 percent; \*\*\* 1 percent.

Table 7: Impact of Bank Liquidity Shocks on Letter-of-Credit Issuance: Importer-Bank Level

Dependent variable	$\Delta \ln(LC)_{ij}$			$\Delta \ln(\text{Import})_{ij}$		
	(1)	(2)	(3)	(4)	(5)	(6)
$\Delta \ln(\text{Deposit})_{ij}$	2.870 ** (1.322)	3.026 ** (1.233)	2.710 ** (1.262)	3.019 ** (1.450)	3.127 ** (1.440)	2.692 * (1.442)
$\ln(1/LC)_{ij}$		0.299 *** (0.057)	0.285 *** (0.065)		0.206 *** (0.058)	0.182 *** (0.061)
$\ln(\text{Assets})_{ij}$			-0.206 (0.220)			-0.268 (0.194)
$\ln(\text{Liquid Assets})_{ij}$			0.173 (0.177)			0.155 (0.191)
Fixed effects	imp+cty	imp+cty	imp+cty	imp+cty	imp+cty	imp+cty
Obs	631	631	631	631	631	631
# of importers	133	133	133	133	133	133
Adj R squared	0.114	0.135	0.133	0.095	0.108	0.109

Note: The dependent variable in columns (1)-(3) is the importer-exporter-level growth in the value of letter-of-credit transactions measured as the change in the log value of letter-of-credit transactions between the pre-crisis and the post-crisis period. The dependent variable in columns (4)-(6) is the importer-exporter-level growth in the value of total import transactions measured as the change in the log value of total imports between the pre-crisis and the post-crisis period. The sample includes, among all importers with multiple exporters, all importer-exporter pairs that undertook letter-of-credit transactions in both periods and received letters-of-credit from more than one bank during the periods, but excludes a country's only one exporter. Underlined independent variables are the importer-exporter-level (pre-crisis value of letter-of-credit transactions) weighted average of the bank deposit growth between two periods, the inverse of importer-exporter-level (pre-crisis value of letter-of-credit transactions) weighted average of the importer-bank-level pre-crisis value of letter-of-credit issuance in logarithm, and similarly weighted average of bank's pre-crisis total and liquid asset value in logarithm. All columns include both importer fixed effects and country fixed effects. Standard errors in parentheses are clustered at the country level. Significance: \* 10 percent; \*\* 5 percent; \*\*\* 1 percent.

Table 8: Impact of Bank Liquidity Shocks on Letter-of-Credit Issuance: Importer-Exporter Level

Dependent variable	$\Delta \ln(\text{LC})_{ij}$				$\Delta \ln(\text{Import})_{ij}$			
	(1)	(2)	(3)	(4)	(5)	(6)	(7)	(8)
(Big) <sub>i</sub>		1.288 ** (0.580)	0.335 (0.288)	0.042 (0.318)		1.256 ** (0.544)	0.146 (0.305)	0.062 (0.265)
$\Delta \ln(\text{Deposit})_{ij}$	2.465 *** (0.870)	10.597 ** (4.127)	6.498 *** (1.970)	5.125 *** (1.272)	1.483 ** (0.732)	9.391 *** (3.184)	4.656 *** (1.495)	4.042 *** (1.128)
(Big) <sub>i</sub> × $\Delta \ln(\text{Deposit})_{ij}$		-8.253 * (4.327)	-4.221 ** (2.101)	-2.703 (1.654)		-8.025 ** (3.456)	-3.307 * (1.699)	-2.619 * (1.398)
$\ln(\text{Assets})_{ij}$	0.187 *** (0.067)	0.194 *** (0.069)	0.199 *** (0.068)	0.215 *** (0.066)	0.085 * (0.045)	0.091 ** (0.045)	0.097 ** (0.044)	0.111 ** (0.043)
$\ln(\text{Liquid Assets})_{ij}$	-0.132 *** (0.016)	-0.135 *** (0.015)	-0.141 *** (0.016)	-0.166 *** (0.014)	-0.111 *** (0.019)	-0.114 *** (0.018)	-0.120 *** (0.019)	-0.142 *** (0.018)
Fixed effects	country	country	country	country	country	country	country	country
Obs	1,147	1,147	1,147	1,147	1,147	1,147	1,147	1,147
# of importers	403	403	403	403	403	403	403	403
Adj R squared	0.065	0.066	0.069	0.083	0.056	0.058	0.062	0.076

Note: The dependent variable in columns (1)-(4) is the importer-exporter-level growth in the value of letter-of-credit transactions measured as the change in the log value of letter-of-credit transactions between the pre-crisis and the post-crisis period. The dependent variable in columns (5)-(8) is the importer-exporter-level growth in the value of total import transactions measured as the change in the log value of total imports between the pre-crisis and the post-crisis period. The sample includes all importer-exporter pairs that undertook letter-of-credit transactions in both periods, but excludes a country's only one exporter.  $\Delta \ln(\text{Deposits})_{ij}$  is the importer-exporter-level (pre-crisis value of letter-of-credit transactions) weighted average of the bank deposit growth between two periods. (Big)<sub>i</sub> is dummy variable equal 1 if an importer's total imports value is above 10th (columns(2) and (6)), 20th (columns (3) and (7)), and 50th percentile (columns (4) and (8)) of all importers. Other underlined bank-level controls include the importer-exporter-level (pre-crisis value of letter-of-credit transactions) weighted average of bank's pre-crisis total and liquid asset value in logarithm. All columns include country fixed effects. Standard errors in parentheses are clustered at the country level. Significance: \* 10 percent; \*\* 5 percent; \*\*\* 1 percent.

Table 9: Impact of Bank Liquidity Shocks on Letter-of-Credit Issuance: Importer-Exporter Level by Importer Sizes

Dependent variable	$(\text{LC}_{ijb,post} - \text{LC}_{ijb,pre}) / (\text{LC}_{ijb,post} + \text{LC}_{ijb,pre})$			$\Delta \ln(\text{LC})_{ijb}$			EXIT=1 <sub>ijb</sub>		
	(1)	(2)	(3)	(4)	(5)	(6)	(7)	(8)	(9)
(Non-Exposure) <sub>b</sub>	0.218 *** (0.056)	0.190 *** (0.041)	0.323 * (0.173)	0.395 *** (0.125)	0.508 *** (0.093)	0.801 ** (0.361)	-0.172 *** (0.054)	-0.123 *** (0.031)	-0.228 (0.142)
$\ln(1/\text{LC})_{ib,pre}$		-0.065 * (0.032)	-0.056 (0.036)		0.276 * (0.127)	0.280 ** (0.123)		0.113 *** (0.022)	0.106 *** (0.026)
$\ln(\text{Assets})_{b,pre}$			0.084 (0.093)			0.195 (0.178)			-0.050 (0.083)
$\ln(\text{Liquid Assets})_{b,pre}$			0.018 (0.086)			0.032 (0.245)			-0.028 (0.074)
Fixed effects	imp-exp	imp-exp	imp-exp	imp-exp	imp-exp	imp-exp	imp-exp	imp-exp	imp-exp
Obs	1,437	1,437	1,437	381	381	381	1,437	1,437	1,437
# of imp-exp pairs	657	657	657	168	168	168	657	657	657
# of importers	177	177	177	67	67	67	177	177	177
Adj R squared	0.193	0.211	0.215	0.051	0.101	0.099	0.259	0.336	0.338

Note: The dependent variable in column (1)-(3) is the importer-exporter-bank-level growth in the value of letter-of-credit transactions measured as the change in the value of letter of credit transactions between the pre-crisis and the post-crisis period scaled by the sum of the value of letter-of-credit transactions in these two periods. The dependent variable in columns (4)-(6) is the importer-exporter-bank-level growth in the value of letter-of-credit transactions measured as the change in the log value of letter-of-credit transactions between the pre-crisis and the post-crisis period. The dependent variable in columns (7)-(9) is the importer-exporter-bank-level dummy variable equal to 1 if an importer-exporter pair discontinued letter-of-credit transactions supported by a bank in the post-crisis period, and 0 otherwise. The baseline sample in columns (1)-(3) and (7)-(9) includes all importer-exporter pairs for which letter-of-credit transactions were undertaken by multiple issuing banks in the pre-crisis period, but excludes importer-bank pairs with only one exporter. The sample in columns (4)-(6) is the subset of the baseline sample for which the change in log value is well defined. (Non-Exposure) is the bank-level indicator variable that turns off if a bank borrowed syndicated loans from foreign banks between 2005 and 2007. Other independent variables are pre-crisis value of letters of credit issued at the importer-bank-level in logarithm, and bank's pre-crisis total and liquid asset value in logarithm. All columns include importer-exporter fixed effects. Standard errors in parentheses are clustered at the bank level. Significance: \* 10 percent; \*\* 5 percent; \*\*\* 1 percent.

Table 10: Robustness Checks: Importer-Exporter-Bank Level with the Non-Exposure as the Bank Liquidity Shocks Measure

Dependent variable	$\Delta \ln(LC)_{ij}$			$\Delta \ln(Import)_{ij}$		
	(1)	(2)	(3)	(4)	(5)	(6)
<u>(Non-Exposure)</u> <sub>ij</sub>	0.403 *** (0.114)	0.389 *** (0.118)	0.680 *** (0.135)	0.431 *** (0.082)	0.422 *** (0.086)	0.622 *** (0.089)
<u>ln(1/LC)</u> <sub>ij</sub>		0.285 *** (0.064)	0.298 *** (0.058)		0.192 *** (0.069)	0.193 *** (0.057)
<u>ln(Assets)</u> <sub>ij</sub>			-0.240 (0.194)			-0.308 * (0.154)
<u>ln(Liquid Assets)</u> <sub>ij</sub>			0.600 *** (0.177)			0.553 *** (0.147)
Fixed effects	imp+cty	imp+cty	imp+cty	imp+cty	imp+cty	imp+cty
Obs	631	631	631	631	631	631
# of importers	133	133	133	133	133	133
Adj R squared	0.129	0.148	0.159	0.118	0.128	0.137

Note: The dependent variable in columns (1)-(3) is the importer-exporter-level growth in the value of letter-of-credit transactions measured as the change in the log value of letter-of-credit transactions between the pre-crisis and the post-crisis period. The dependent variable in columns (4)-(6) is the importer-exporter-level growth in the value of total import transactions measured as the change in the log value of total imports between the pre-crisis and the post-crisis period. The sample includes, among all importers with multiple exporters, all importer-exporter pairs that undertook letter-of-credit transactions in both periods and received letters-of-credit from more than one bank during the periods, but excludes a country's only one exporter. (Non-Exposure) is the indicator variable that turns off if at least one issuing bank for an importer-exporter borrowed syndicated loans from foreign banks between 2005 and 2007. Other underlined independent variables are the inverse of importer-exporter-level (pre-crisis value of letter-of-credit transactions) weighted average of the importer-bank-level pre-crisis value of letter-of-credit issuance in logarithm, and similarly weighted average of bank's pre-crisis total and liquid asset value in logarithm. All columns include both importer fixed effects and country fixed effects. Standard errors in parentheses are clustered at the country level. Significance: \* 10 percent; \*\* 5 percent; \*\*\* 1 percent.

Table 11: Robustness Checks: Importer-Exporter Level with the Non-Exposure as the Bank Liquidity Shocks Measure

Dependent variable	$(LC_{ijb,post} - LC_{ijb,pre}) / (LC_{ijb,post} + LC_{ijb,pre})$			$\Delta \ln(LC)_{ijb}$			EXIT=1 <sub>ijb</sub>		
	(1)	(2)	(3)	(4)	(5)	(6)	(7)	(8)	(9)
$\Delta \ln(Deposits)_{ib}$	1.680 ** (0.610)	1.511 ** (0.532)	1.658 *** (0.408)	2.879 (1.885)	4.603 * (2.277)	5.107 *** (1.011)	-1.530 (0.421)	-1.106 *** (0.265)	-1.176 *** (0.224)
<u>ln(1/LC)</u> <sub>ib,pre</sub>		-0.037 (0.027)	-0.029 (0.029)		0.420 *** (0.083)	0.464 *** (0.077)		0.092 *** (0.020)	0.088 *** (0.022)
<u>ln(Assets)</u> <sub>b,pre</sub>			0.187 * (0.104)			1.064 *** (0.179)			-0.086 (0.083)
<u>ln(Liquid Assets)</u> <sub>b,pre</sub>			-0.196 ** (0.081)			-1.001 *** (0.186)			0.089 (0.072)
Fixed effects	imp-exp	imp-exp	imp-exp	imp-exp	imp-exp	imp-exp	imp-exp	imp-exp	imp-exp
Obs	1,437	1,437	1,437	323	323	323	1,437	1,437	1,437
# of imp-exp pairs	657	657	657	142	142	142	657	657	657
# of importers	177	177	177	58	58	58	177	177	177
Adj R squared	0.174	0.179	0.190	-0.057	0.045	0.086	0.303	0.355	0.357

Note: The dependent variable in column (1)-(3) is the importer-exporter-bank-level growth in the value of letter-of-credit transactions measured as the change in the value of letter of credit transactions between the pre-crisis and the post-crisis period scaled by the sum of the value of letter-of-credit transactions in these two periods. The dependent variable in columns (4)-(6) is the importer-exporter-bank-level growth in the value of letter-of-credit transactions measured as the change in the log value of letter-of-credit transactions between the pre-crisis and the post-crisis period. The dependent variable in columns (7)-(9) is the importer-exporter-bank-level dummy variable equal to 1 if an importer-exporter pair discontinued letter-of-credit transactions supported by a bank in the post-crisis period, and 0 otherwise. The baseline sample in columns (1)-(3) and (7)-(9) includes all importer-exporter pairs for which letter-of-credit transactions were undertaken by multiple issuing banks in the pre-crisis period, but excludes importer-bank pairs with only one exporter. The sample in columns (4)-(6) is the subset of the baseline sample for which the change in log value is well defined. Independent variables are the bank-level growth in the deposits between two periods, the inverse of pre-crisis value of letters of credit issued at the importer-bank-level in logarithm, and bank's pre-crisis total and liquid asset value in logarithm. All columns include importer-exporter fixed effects. Standard errors in parentheses are clustered at the bank level. Significance: \* 10 percent; \*\* 5 percent; \*\*\* 1 percent.

Table 12: Robustness Checks: Importer-Exporter-Bank Level with Q1-Q3 2009 as the Post-crisis period

Dependent variable	$(LC_{ijsb,post} - LC_{ijsb,pre}) / (LC_{ijsb,post} + LC_{ijsb,pre})$			$\Delta \ln(LC)_{ijsb}$			EXIT=1 <sub>ijsb</sub>		
	(1)	(2)	(3)	(4)	(5)	(6)	(7)	(8)	(9)
$\Delta \ln(\text{Deposits})_b$	1.001 ** (0.467)	0.720 *** (0.459)	0.845 * (0.440)	2.661 (1.649)	3.656 ** (1.701)	3.737 ** (1.422)	-0.984 ** (0.389)	-0.592 (0.363)	-0.661 * (0.374)
$\ln(1/LC)_{ib,pre}$		0.080 (0.025)	0.075 *** (0.025)		-0.238 * (0.127)	-0.273 ** (0.127)		-0.112 *** (0.018)	-0.109 *** (0.018)
$\ln(\text{Assets})_{b,pre}$			0.150 ** (0.065)			0.539 (0.371)			-0.086 (0.060)
$\ln(\text{Liquid Assets})_{b,pre}$			-0.186 *** (0.058)			-0.668 (0.446)			-0.109 * (0.060)
Fixed effects	imp-exp-hs2	imp-exp-hs2	imp-exp-hs2	imp-exp-hs2	imp-exp-hs2	imp-exp-hs2	imp-exp-hs2	imp-exp-hs2	imp-exp-hs2
Obs	1,804	1,804	1,804	410	410	410	1,804	1,804	1,804
# of imp-exp-hs2	830	830	830	185	185	185	830	830	830
# of imp-exp pairs	647	647	647	163	163	163	647	647	647
Adj R squared	0.153	0.182	0.193	0.090	0.124	0.143	0.249	0.329	0.333

Note: The dependent variable in column (1)-(3) is the importer-exporter-hs2-bank-level growth in the value of letter-of-credit transactions measured as the change in the value of letter of credit transactions between the pre-crisis and the post-crisis period scaled by the sum of the value of letter-of-credit transactions in these two periods. The dependent variable in columns (4)-(6) is the importer-exporter-hs2-bank-level growth in the value of letter-of-credit transactions measured as the change in the log value of letter-of-credit transactions between the pre-crisis and the post-crisis period. The dependent variable in columns (7)-(9) is the importer-exporter-hs2-bank-level dummy variable equal to 1 if an importer-exporter-hs2 triplet discontinued letter-of-credit transactions supported by a bank in the post-crisis period, and 0 otherwise. The baseline sample in columns (1)-(3) and (7)-(9) includes all importer-exporter-hs2 triplets for which letter-of-credit transactions were undertaken by multiple issuing banks in the pre-crisis period, but excludes importer-bank pairs with only one exporter. The sample in columns (4)-(6) is the subset of the baseline sample for which the change in log value is well defined. Independent variables are the bank-level growth in the deposits between two periods, the inverse of pre-crisis value of letters of credit issued at the importer-bank-level in logarithm, and bank's pre-crisis total and liquid asset value in logarithm. All columns include importer-exporter fixed effects. Standard errors in parentheses are clustered at the hs2 level. Significance: \* 10 percent; \*\* 5 percent; \*\*\* 1 percent.

Table 13: Robustness Checks: Importer-Exporter-HS2-Bank Level